



WETROOM CONCEPT Floorcoverings

Optima Multisafe	p. 238
Granit Multisafe	p. 240
iQ Optima 1.5mm	p. 242
Safetred Aqua	p. 244
Aquarelle Floor	p. 246

Wallcoverings

Aquarelle Wall HFS	p. 254
Aquarelle Wall	p. 258
Aquarelle Wall Borders	p. 262

WALL PROTECTIONS

Wallgard	p. 270
ProtectWALL	p. 272

STATIC CONTROL Homogeneous vinyl

iQ Toro SC	p. 282
iQ Granit SD	p. 284
Eclipse SD	p. 286

Linoleum

Linoleum xf ² SD Static Dissipative	p. 288
--	--------

SAFETY Homogeneous vinyl

Granit Safe.T	p. 294
---------------	--------

Heterogeneous vinyl

Safetred Design	p. 300
Safetred Dimension	p. 304
Safetred Spectrum - Spectrum Tiles	p. 306
Safetred Universal	p. 308
Safetred Universal Plus (R11)	p. 310
Safetred Transport	p. 312

STAIRS & ACCESSIBILITY

Tapiflex Stairs	p. 318
Warning Tile & Tactile strip	p. 322



WETROOM CONCEPT



WETROOM CONCEPT

Floorcoverings

Optima Multisafe	p. 238
Granit Multisafe	p. 240
iQ Optima 1.5mm	p. 242
Safetred Aqua	p. 244
Aquarelle Floor	p. 246

Wallcoverings

Aquarelle Wall HFS	p. 254
Aquarelle Wall	p. 258
Aquarelle Wall Borders	p. 262



OUR SELECTION OF ACCESSORIES FOR WETROOM



Aquarelle Wall HFS

Secures the wall and protects it from water infiltration.

Junction profile

PJ30

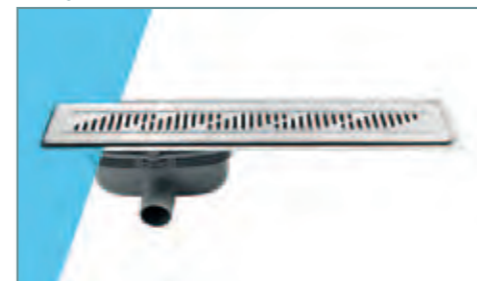
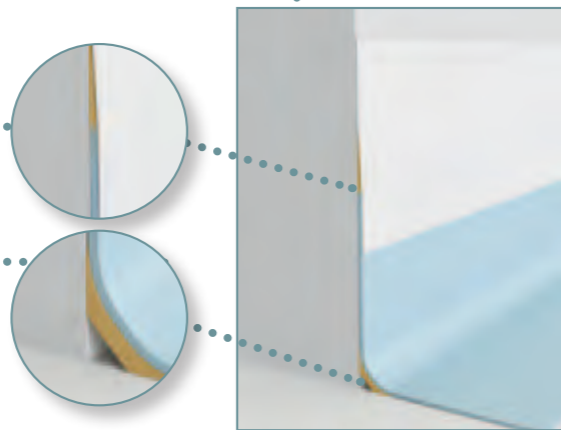
Provides a perfect finish and protects the edge of the wall covering.

Cove former

PA20

Improves hygiene inside wall corner and makes maintenance easier.

See p. 488 for detailed info



Rectangular drain

Flooring to be inserted into the drain for perfect water tightness.

See p. 489 for detailed info



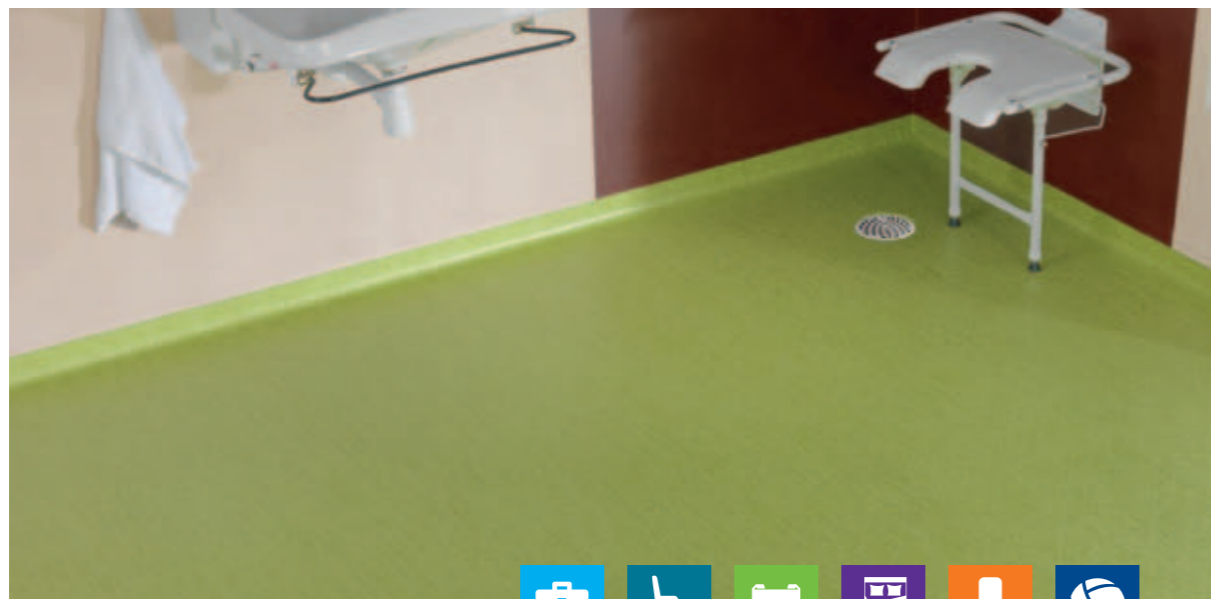
Skirting

PTS

Rubber transition profile. To be welded to floorings on both sides.

See p. 488 for detailed info

WETROOM FLOORCOVERINGS



Floorcovering offer included into the complete wetroom concept, for wet environment in areas from healthcare to student halls and sports centres, to collective housing and hospitality environments

SENSORIAL BENEFITS

- Unique all-in-one concept: coordinated floors, walls and accessories offer
- 73 attractive and practical colours and designs
- Mix & match with other Tarkett ranges (Tapiflex & Acczent Evolution, Tapiflex & Acczent Excellence, ProtectWALL)

FUNCTIONAL BENEFITS

- Hygienic and clean
- Hard wearing and watertight installation
- Easy access and added value on safety (Class B or C floorings) for healthcare or aged care applications
- Easy to clean

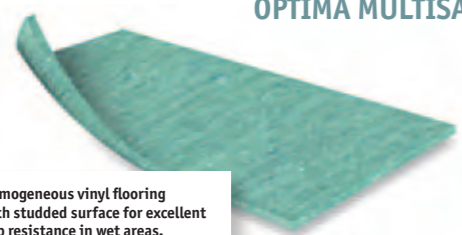
ENVIRONMENTAL BENEFITS

- Healthier interior with optimal indoor air quality
- 100% recyclable solution



Homogeneous vinyl flooring with studded surface for excellent slip resistance in wet areas.

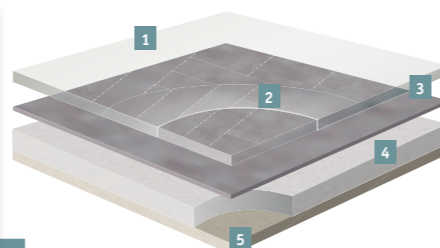
GRANIT MULTISAFE OPTIMA MULTISAFE



Homogeneous vinyl flooring with studded surface for excellent slip resistance in wet areas.

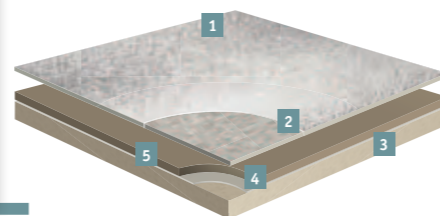
iQ OPTIMA

- 1 TopClean XP Pur reinforced surface: Excellent resistance to scuffing, soiling and staining and easy maintenance
- 2 Transparent wear layer
- 3 Printed film
- 4 Intermediary layer
- 5 Backing layer



AQUARELLE FLOOR

- 1 Safety Clean XP Pur reinforced surface: Excellent resistance to scuffing, soiling and staining and easy maintenance
- 2 Pigmented wear layer/ class t. optimum resistance to wear. Cork granules: Sustainable slip resistance throughout product life + enhanced abrasion and scratch resistance
- 3 Compact calendared sheet: Very high static point properties. Increased resistance to tear / Flexible and easy to install
- 4 Glass fibre non woven reinforcement: Unique dimensional stability and anti curl effect.
- 5 Impregnation coating



SAFETRED AQUA

TECHNICAL DATA	STANDARDS	Optima Multisafe	Granit Multisafe	iQ Optima 1.5 mm	Safetred Aqua	Aquarelle Floor
Classification						
Classification	ISO 10874 (EN 685) domestic commercial industrial	Class: 31	Class: 31	Classes: 32 41	Classes: 23 32	Class: 31
UPEC Classification	UPEC Classification NF UPEC certificate number (Ref NF189)	—	U4 P3 E2/3 C2 312-013.1	—	—	—
Characteristics						
Total thickness	ISO 24346 (EN 428)	2.30mm	2.50mm	1.50mm	2.00mm	1.50mm
Wear layer thickness	ISO 24340 (EN 429)	2.00mm	2.00mm	1.50mm	—	0.35mm
Total weight	ISO 23997 (EN 430)	2 820g/m ²	3 010g/m ²	2 100g/m ²	2 800g/m ²	2 400g/m ²
Wear layer reinforcement	—	—	—	—	Yes	—
Abrasion group Volume loss	EN 660-2	≤ 2.00mm ³			—	≤ 2.00mm ³
Abrasion	EN 13845 Annex D	—	—	—	< 10% particle loss	—
Technical performances						
Residual indentation	Average measured value	0.02mm			≤ 0.10mm	
	ISO 24343-1 (EN 433) requirement	≤ 0.10mm			—	
Dimensional stability	ISO 23999 (EN 434)	0.40%	0.20%		0.25%	—
Curly resultant to heat	EN 424	—			≤ 3mm	≤ 8mm
Reaction to fire	EN 13501-1 EN ISO 9239-1 EN ISO 11925-2	B _f s1 ≥ 8 kW/m ² Pass	B _f s1 ≥ 8 kW/m ² Pass	B _f s1 ≥ 8 kW/m ² Pass	B _f s1 on cement ≥ 8 kW/m ²	B _f s1 glued over any A2 _f or A1 _f substrate
Marine equipment	IMO FTPC Part 5 and 2 IMO Res. A653	0575		—		
Slip resistance	TRRL Pendulum 4S (Wet) BS 7976 part 2 DIN 51130 EN 13893 Surface roughness Rz DIN 51097 EN 13845 Annex C	R10 ≥ 0.3		R9 ≥ 0.3	> 36 R11 > 30 μm C Esb Esf	R9 ≥ 0.3
Bare foot test	DIN 51097	Class B (18°)	Class C (27°)	—	—	—
Seam strength (N/50mm)	EN 684	Average value ≥ 240 N/50mm Individual values ≥ 180 N/50mm			—	Average value ≥ 240 N/50mm Individual values ≥ 180 N/50mm
Static electrical charge	EN 1815 EN 1081 EN 14041	< 2kV	Approx 10 ¹⁰ Ohms < 2kV	< 2kV	> 10 ¹⁰ Ohms 2kV on concrete Antistatic	< 2kV
Light fastness	EN ISO 105-B02	≥ 6			7	≥ 6
Chemical resistance	ISO 26987 (EN 423)	Good resistance			Good resistance	—
Fungi and bacteria resistance	ISO 846: Part C	Does not favour growth			—	—
Thermal resistance Underfloor heating	EN ISO 10456	Approx. 0.01m ² K/W Suitable - max 27 °C	0.013m ² K/W Suitable - max 27 °C	0.015m ² K/W Suitable - max 27 °C	0.01m ² K/W Suitable	0.02m ² K/W Suitable
Form of delivery	ISO 24341 (EN 426)	Rolls: 25lm x 2m	Rolls: 25lm x 2m	Rolls: 30lm x 2m	Rolls: 20lm x 2m	Rolls: 20lm x 2m 23lm x 3m
Colours	—	12	13	10	12	17

The above information is subject to modifications for the benefit of further improvement (01/2014).
For more detailed technical information, please contact Tarkett.



Download the product offer

OPTIMA MULTISAFE



Optima Multisafe - 3240863



3240 838



3240 848



3240 861



3240 853



3240 873



3240 874



3240 886



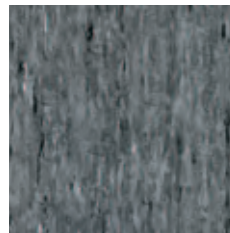
3240 860



3240 820



3240 863



3240 866



3240 845

TECHNICAL DATA	STANDARDS	Optima Multisafe
Classification		
Classification	ISO 10874 (EN 685) commercial	Class: 31
Characteristics		
Total thickness	ISO 24346 (EN 428)	2.30mm
Wear layer thickness	ISO 24340 (EN 429)	2.00mm
Total weight	ISO 23997 (EN 430)	2 820g/m ²
Wear layer reinforcement	—	—
Abrasion group	EN 660-2	≤ 2.00mm ³
Abrasion	EN 13845 Annex D	—
Technical performances		
Residual indentation	Average measured value	0.02mm
	ISO 24343-1 (EN 433) requirement	≤ 0.10mm
Dimensional stability	ISO 23999 (EN 434)	0.40%
Curl resultant to heat	EN 424	—
Reaction to fire	EN 13501-1	B _{f1} ≤ 1
	EN ISO 9239-1 EN ISO 11925-2	≥ 8 kW/m ² Pass
Slip resistance	DIN 51130 EN 13893	R10 ≥ 0.3
Bare foot test	DIN 51097	Class B (18°)
Seam strength (N/50mm)	EN 684	Average value ≥ 240 N/50mm Individual values ≥ 180 N/50mm
Static electrical charge	EN 1815	< 2kV
Light fastness	EN ISO 105-B02	≥ 6
Chemical resistance	ISO 26987 (EN 423)	Good resistance
Fungi and bacteria resistance	ISO 846: Part C	Does not favour growth
Thermal resistance Underfloor heating	EN ISO 10456	Approx. 0.01m ² K/W Suitable - max 27 °C

The above information is subject to modifications for the benefit of further improvement (01/2014). For more detailed technical information, please contact Tarkett.

OPTIMA MULTISAFE

Main Product Features

- Waterproof installation, ideal for wet commercial applications
- Studded surface for excellent slip resistance
- Warm and vivid tones to coordinate with Aquarelle Wall HFS
- Hygienic and easy to maintain

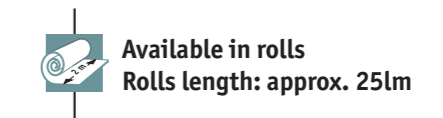
Surface Treatment



Sustainability Tag



Logistics Information



Laying direction:

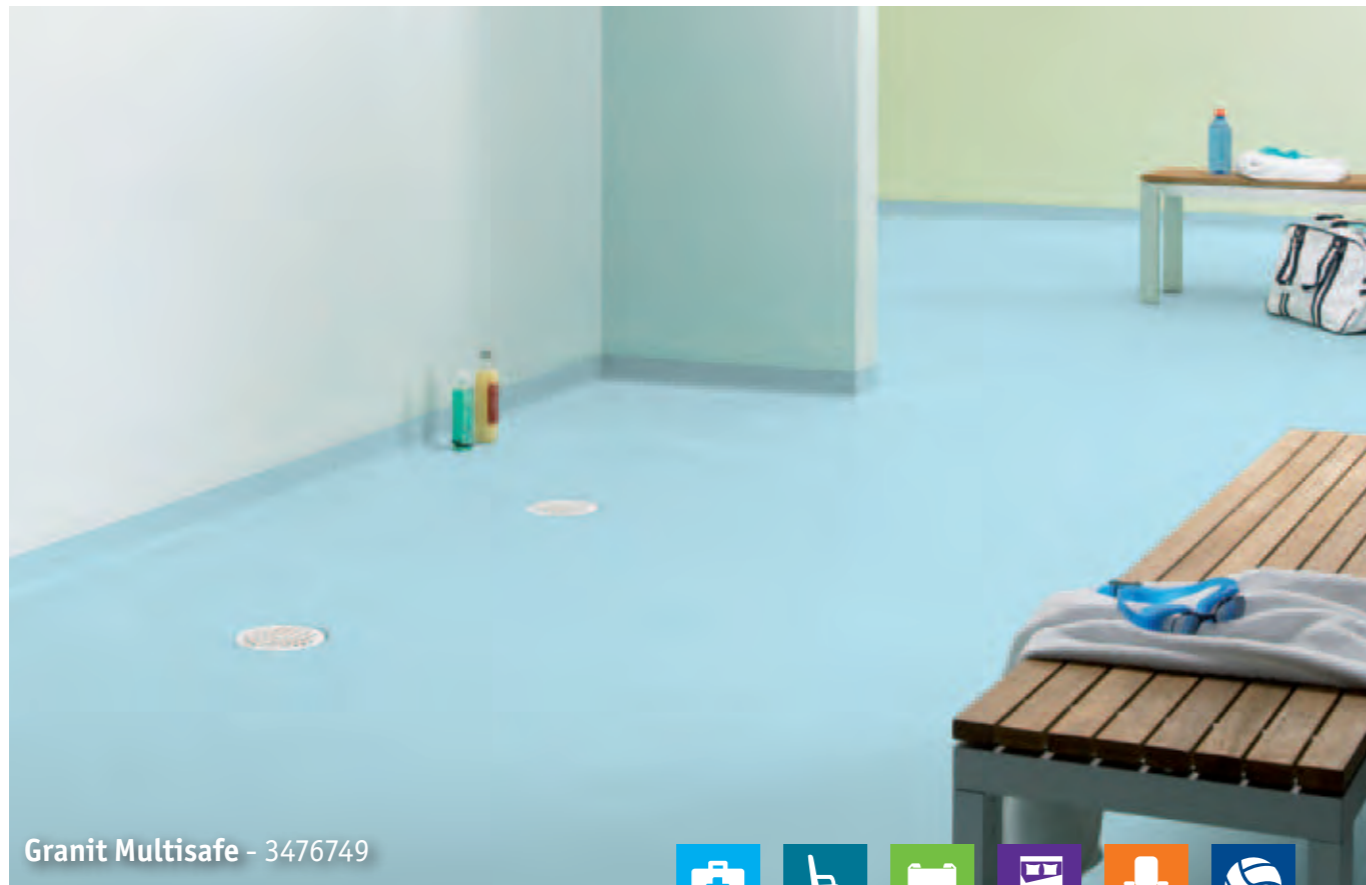


General Information

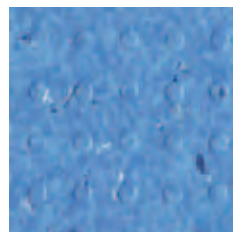


Play with the Room Designer

GRANIT MULTISAFE



Granit Multisafe - 3476749



3476 379



3476 740



3476 741



3476 742



3476 743



3476 744



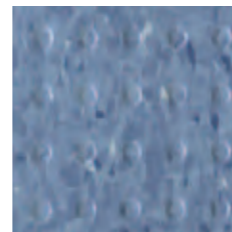
3476 745



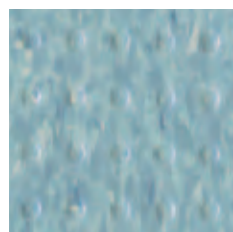
3476 746



3476 747



3476 748



3476 749



3476 750



3476 751

TECHNICAL DATA	STANDARDS	Granit Multisafe
Classification		
Classification	ISO 10874 (EN 685) commercial	Class: 31
UPEC Classification	UPEC Classification NF UPEC certificate number (Ref NF189)	U4 P3 E2/3 C2 312-013.1
Characteristics		
Total thickness	ISO 24346 (EN 428)	2.50mm
Wear layer thickness	ISO 24340 (EN 429)	2.00mm
Total weight	ISO 23997 (EN 430)	3 010g/m ²
Wear layer reinforcement	—	—
Abrasion group Volume loss	EN 660-2	≤ 2.00mm ³
Abrasion	EN 13845 Annex D	—
Technical performances		
Residual indentation	Average measured value	0.02mm
	ISO 24343-1 (EN 433) requirement	≤ 0.10mm
Dimensional stability	ISO 23999 (EN 434)	0.20%
Curl resultant to heat	EN 424	—
Reaction to fire	EN 13501-1	B _f s1
	EN ISO 9239-1 EN ISO 11925-2	≥ 8 kW/m ² Pass
Marine equipment	IMO FTPC Part 5 and 2 IMO Res. A653	
Slip resistance	DIN 51130 EN 13893	R10 ≥ 0.3
Bare foot test	DIN 51097	Class C (27°)
Seam strength (N/50mm)	EN 684	Average value ≥ 240 N/50mm
		Individual values ≥ 180 N/50mm
Static electrical charge	EN 1815	Approx 10 ¹⁰ Ohms < 2kV
Light fastness	EN ISO 105-B02	≥ 6
Chemical resistance	ISO 26987 (EN 423)	Good resistance
Fungi and bacteria resistance	ISO 846: Part C	Does not favour growth
Thermal resistance Underfloor heating	EN ISO 10456	0.013m ² K/W Suitable - max 27 °C

The above information is subject to modifications for the benefit of further improvement (01/2014).
For more detailed technical information, please contact Tarkett.

GRANIT MULTISAFE

Main Product Features

- Waterproof installation, ideal for wet commercial applications
- Studded surface for excellent slip resistance
- Warm and vivid tones to coordinate with Aquarelle Wall HFS
- Hygienic and easy to maintain

Surface Treatment



Sustainability Tag

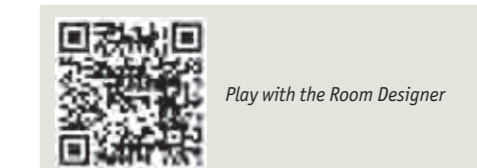


Logistics Information

Available in rolls
Rolls length: approx. 25lm

Laying direction:

General Information



iQ OPTIMA 1.5mm



iQ Optima 1.5mm - 3247825



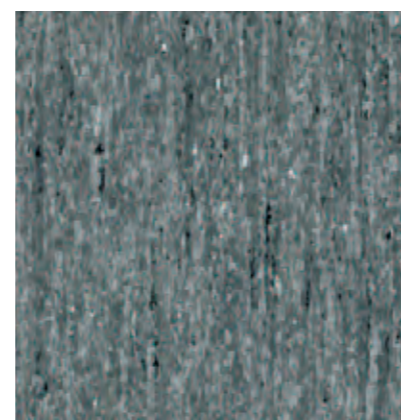
3247 821



3247 825



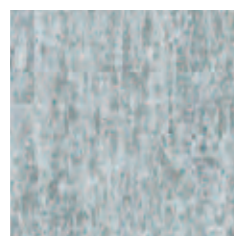
3247 836



3247 866



3247 850



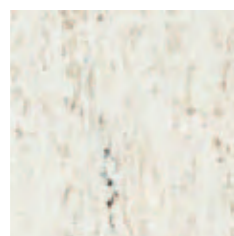
3247 853



3247 856



3247 857



3247 862



3247 864

TECHNICAL DATA	STANDARDS	iQ Optima 1.5 mm
Classification		
Classification	ISO 10874 (EN 685) commercial industrial	Classes: 32 41
Characteristics		
Total thickness	ISO 24346 (EN 428)	1.50mm
Wear layer thickness	ISO 24340 (EN 429)	1.50mm
Total weight	ISO 23997 (EN 430)	2 100g/m ²
Wear layer reinforcement	—	—
Abrasion group	EN 660-2	≤ 2.00mm ³
Volume loss		
Abrasion	EN 13845 Annex D	—
Technical performances		
Residual indentation	Average measured value	0.02mm
	ISO 24343-1 (EN 433) requirement	≤ 0.10mm
Dimensional stability	ISO 23999 (EN 434)	0.20%
Curl resultant to heat	EN 424	—
Reaction to fire	EN 13501-1	B _s s1
	EN ISO 9239-1 EN ISO 11925-2	≥ 8 kW/m ² Pass
Slip resistance	DIN 51130 EN 13893	R9 ≥ 0.3
Bare foot test	DIN 51097	—
Seam strength (N/50mm)	EN 684	Average value ≥ 240 N/50mm
		Individual values ≥ 180 N/50mm
Static electrical charge	EN 1815	< 2kV
Light fastness	EN ISO 105-B02	≥ 6
Chemical resistance	ISO 26987 (EN 423)	Good resistance
Fungi and bacteria resistance	ISO 846: Part C	Does not favour growth
Thermal resistance Underfloor heating	EN ISO 10456	0.015m ² K/W
		Suitable - max 27°C

The above information is subject to modifications for the benefit of further improvement (01/2014). For more detailed technical information, please contact Tarkett.

iQ OPTIMA 1.5mm

Main Product Features

- Elegant natural travertine design
- 10 colourways, allowing great colour choice
- 1.5mm version also ideal as wall covering, installed vertically or horizontally for fewer seams
- Quality and composition of the whole construction give superior cleaning characteristics
- Best life cycle cost

Surface Treatment



Sustainability Tag



Logistics Information

Available in rolls
Rolls length: approx. 30lm

Laying direction:

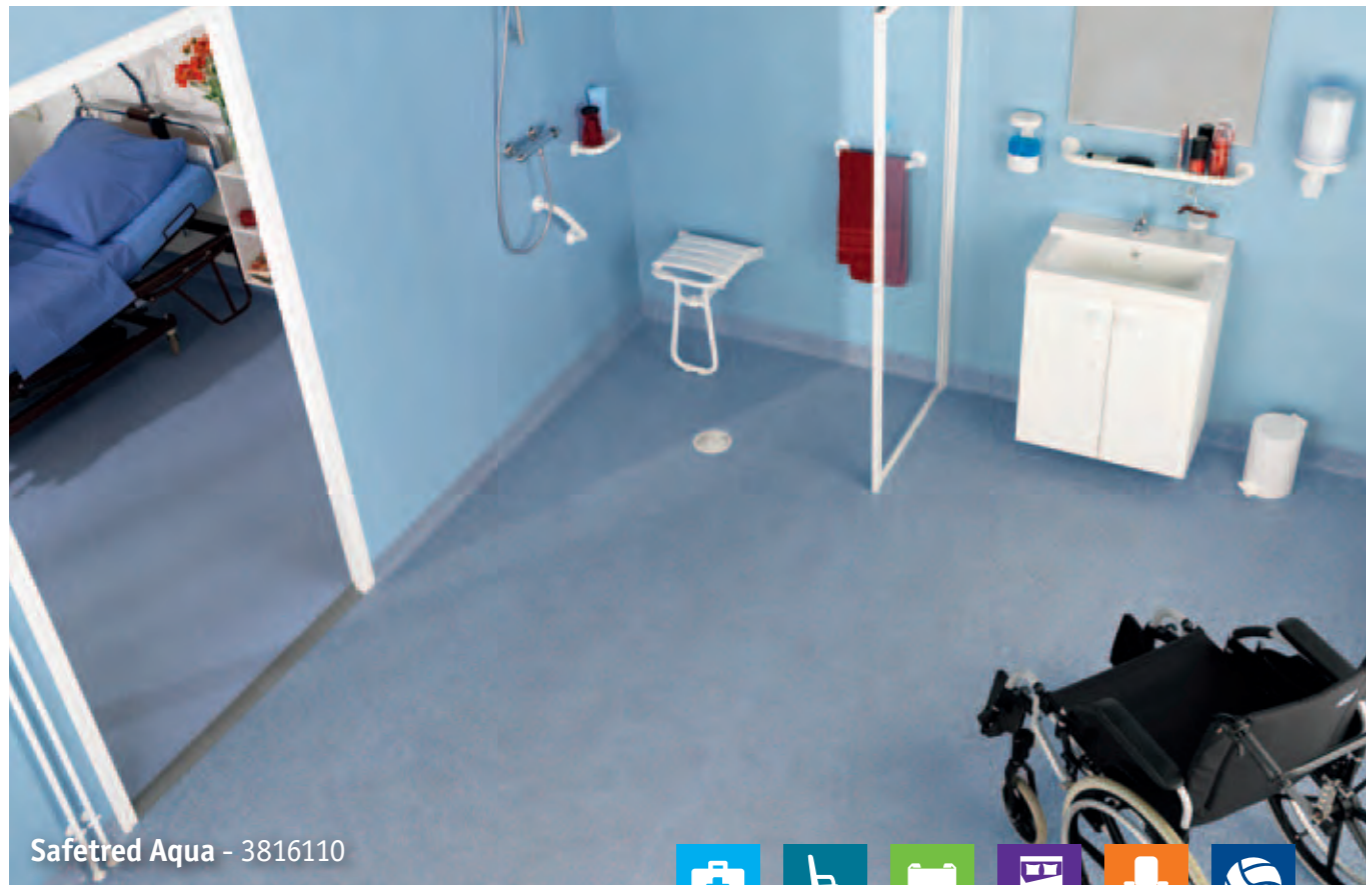


General Information



Play with the Room Designer

SAFETRED AQUA

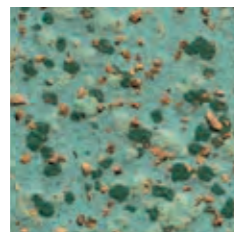


Safetred Aqua - 3816110



Wallaby

3816 100



Fox

3816 101



Cheetah

3816 103



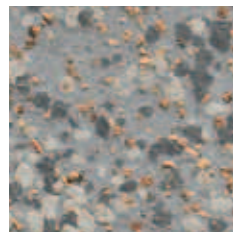
Tapir

3816 106



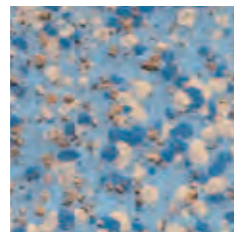
Gazelle

3816 107



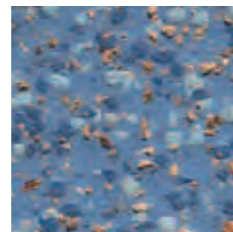
Koala

3816 108



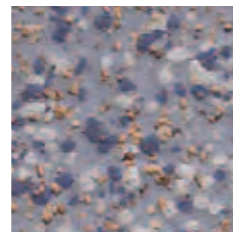
Vole

3816 110



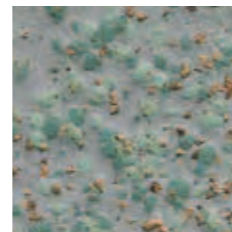
Elk

3816 111



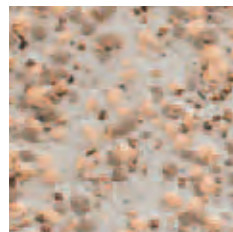
Marmoset

3816 112



Otter

3816 113



Antelope

3816 116



Lynx

3816 119

TECHNICAL DATA	STANDARDS	Safetred Aqua	
Classification			
Classification	ISO 10874 (EN 685) domestic commercial	Classes: 23 32	
Characteristics			
Total thickness	ISO 24346 (EN 428)	2.00mm	
Wear layer thickness	ISO 24340 (EN 429)	—	
Total weight	ISO 23997 (EN 430)	2 800g/m ²	
Wear layer reinforcement	—	Yes	
Abrasion group Volume loss	EN 660-2	—	
Abrasion	EN 13845 Annex D	< 10% particle loss	
Technical performances			
Residual indentation	Average measured value	≤ 0.10mm	
	ISO 24343-1 (EN 433) requirement		
Dimensional stability	ISO 23999 (EN 434)	0.25%	
Curl resultant to heat	EN 424	≤ 3mm	
Reaction to fire	EN 13501-1	B _s s1 on cement	
	EN ISO 9239-1 EN ISO 11925-2	≥ 8 kW/m ²	
Slip resistance	TRRL Pendulum 4S (Wet) BS 7976 part 2 DIN 51130 EN 13893 Surface roughness Rz DIN 51097 EN 13845 Annex C	> 36 R11 > 30 μm C Esb Esf	
	Bare foot test	DIN 51097	—
	Static electrical charge	EN 1815 EN 1081	> 10 ¹⁰ Ohms 2kV on concrete Antistatic
	Light fastness	EN ISO 105-B02	7
Chemical resistance	ISO 26987 (EN 423)	Good resistance	
Fungi and bacteria resistance	ISO 846: Part C	—	
Thermal resistance Underfloor heating	EN ISO 10456	0.01m ² K/W Suitable	

The above information is subject to modifications for the benefit of further improvement (01/2014).
For more detailed technical information, please contact Tarkett.

SAFETRED AQUA

Main Product Features

- R11 slip resistance for superb performance in wet areas
- Bare foot comfort in wet areas
- Safety Clean XP surface for ease of maintenance
- Improved flexibility for ease of installation in falls and drains
- Sustainable slip resistance throughout product life

Surface Treatment



Sustainability Tag



(1) Progressively for all our professional vinyl products during 2014

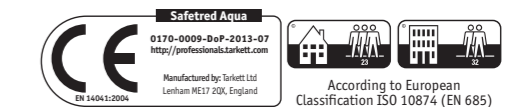
Logistics Information

Available in rolls
Rolls length: approx. 20lm

Laying direction:



General Information



Play with the Room Designer

AQUARELLE FLOOR



Pastille - Turquoise



Pastille



Anthracite

25905 035



Blue

25905 148



Turquoise

25905 149



Red

25905 150

Pebble



Black and White

25905 039

Kiruma



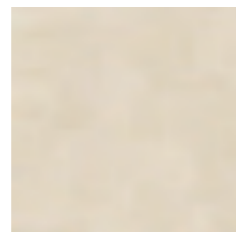
Grey

25905 029



Dark Grey

25905 031



Beige

25905 144



Blue

25905 145



Aluminium

25905 146

TECHNICAL DATA	STANDARDS	Aquarelle Floor
Classification		
Classification	ISO 10874 (EN 685) commercial	Class: 31
Characteristics		
Total thickness	ISO 24346 (EN 428)	1.50mm
Wear layer thickness	ISO 24340 (EN 429)	0.35mm
Total weight	ISO 23997 (EN 430)	2 400g/m ²
Wear layer reinforcement	—	—
Abrasion group Volume loss	EN 660-2	≤ 2.00mm ³
Abrasion	EN 13845 Annex D	—
Technical performances		
Residual indentation	Average measured value	≤ 0.10mm
	ISO 24343-1 (EN 433) requirement	
Dimensional stability	ISO 23999 (EN 434)	—
Curl resultant to heat	EN 424	≤ 8mm
Reaction to fire	EN 13501-1	B _{fl} s1 glued over any A2 _{fl} or A1 _{fl} substrate
Slip resistance	DIN 51130 EN 13893	R9 ≥ 0.3
Bare foot test	DIN 51097	—
Seam strength (N/50mm)	EN 684	Average value ≥ 240 N/50mm
		Individual values ≥ 180 N/50mm
Static electrical charge	EN 1815	< 2kV
Light fastness	EN ISO 105-B02	≥ 6
Chemical resistance	ISO 26987 (EN 423)	—
Fungi and bacteria resistance	ISO 846: Part C	—
Thermal resistance Underfloor heating	EN ISO 10456	0.02m ² K/W Suitable

The above information is subject to modifications for the benefit of further improvement (01/2014). For more detailed technical information, please contact Tarkett.

AQUARELLE FLOOR

Main Product Features

- Waterproof installation, ideal for wet domestic applications
- Unique wetroom concept: floors, walls and accessories available (compatible with Granit and/or Aquarelle Wall)
- Fresh colours and modern designs
- Hygienic and easy to maintain

Surface Treatment



Sustainability Tag



(1) Progressively for all our professional vinyl products during 2014

Logistics Information

Available in rolls
Rolls length: approx. 20lm

Laying direction:

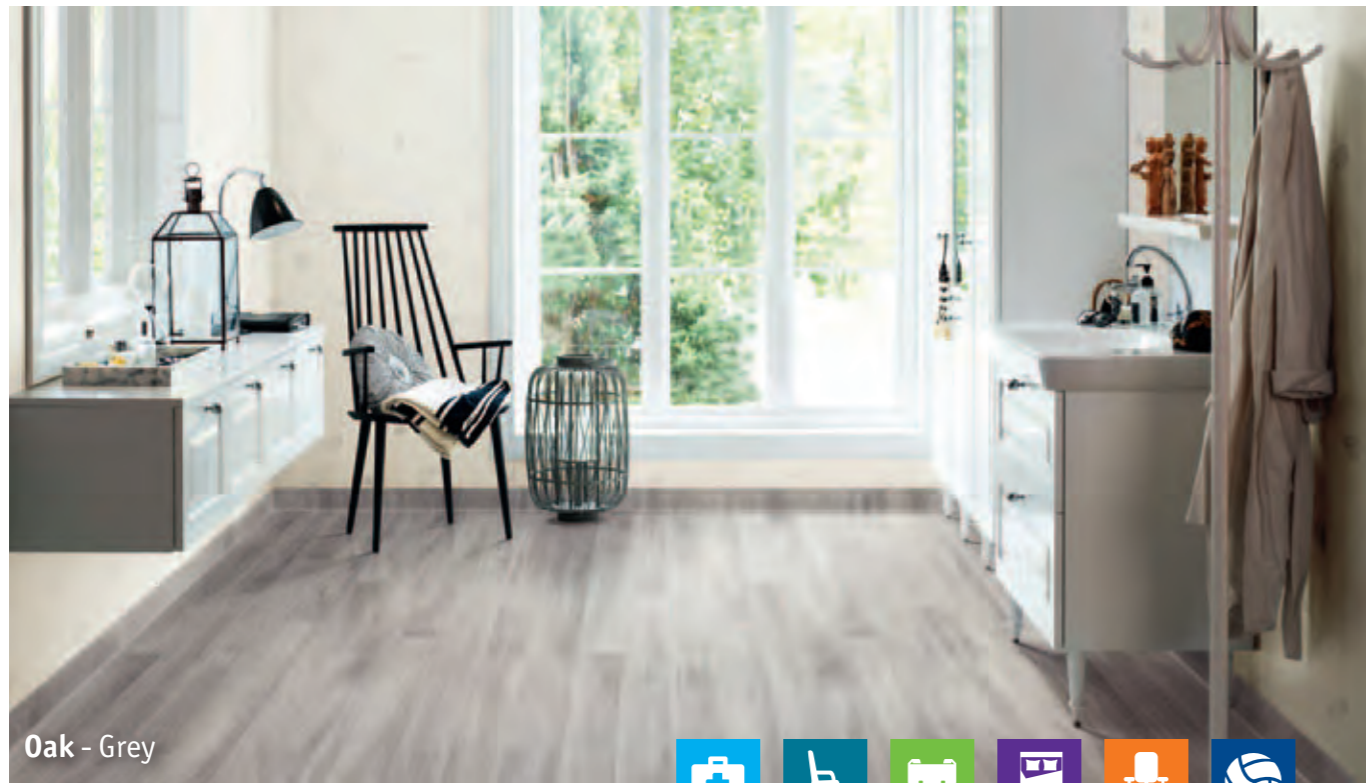


General Information



Play with the Room Designer

AQUARELLE FLOOR



Oak - Grey



Aquastone



Dark Grey

25905 014



Light Grey

25905 141



Beige

25905 142



Anthracite

25905 143

Variata



Grey

25905 138



Dark Grey

25905 039



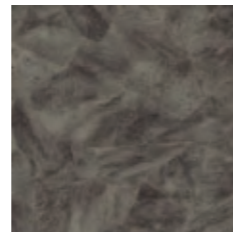
Beige

25905 140



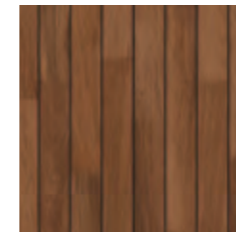
Dark Grey

25905 132



Anthracite

25905 134



Teak

25905 022

Skiffer



White

25905 037



Black

25905 038



Grey

25905 147



White

25905 133

TECHNICAL DATA	STANDARDS	Aquarelle Floor
Classification		
Classification	ISO 10874 (EN 685) commercial	Class: 31
Characteristics		
Total thickness	ISO 24346 (EN 428)	1.50mm
Wear layer thickness	ISO 24340 (EN 429)	0.35mm
Total weight	ISO 23997 (EN 430)	2 400g/m ²
Wear layer reinforcement	—	—
Abrasion group Volume loss	EN 660-2	≤ 2.00mm ³
Abrasion	EN 13845 Annex D	—
Technical performances		
Residual indentation	Average measured value	≤ 0.10mm
	ISO 24343-1 (EN 433) requirement	
Dimensional stability	ISO 23999 (EN 434)	—
Curl resultant to heat	EN 424	≤ 8mm
Reaction to fire	EN 13501-1	B _{fl} s1 glued over any A2 _{fl} or A1 _{fl} substrate
Slip resistance	DIN 51130 EN 13893	R9 ≥ 0.3
Bare foot test	DIN 51097	—
Seam strength (N/50mm)	EN 684	Average value ≥ 240 N/50mm Individual values ≥ 180 N/50mm
Static electrical charge	EN 1815	< 2kV
Light fastness	EN ISO 105-B02	≥ 6
Chemical resistance	ISO 26987 (EN 423)	—
Fungi and bacteria resistance	ISO 846: Part C	—
Thermal resistance Underfloor heating	EN ISO 10456	0.02m ² K/W Suitable

The above information is subject to modifications for the benefit of further improvement (01/2014). For more detailed technical information, please contact Tarkett.

AQUARELLE FLOOR

Main Product Features

- Waterproof installation, ideal for wet domestic applications
- Unique wetroom concept: floors, walls and accessories available (compatible with Granit and/or Aquarelle Wall)
- Fresh colours and modern designs
- Hygienic and easy to maintain

Surface Treatment



Sustainability Tag



(1) Progressively for all our professional vinyl products during 2014

Logistics Information



Available in rolls
Rolls length: approx. 20lm

Laying direction:



General Information



According to European Classification ISO 10874 (EN 685)



Play with the Room Designer

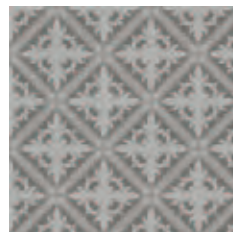
AQUARELLE FLOOR (3m)



Istanbul - Medium Grey



Istanbul



Medium Grey

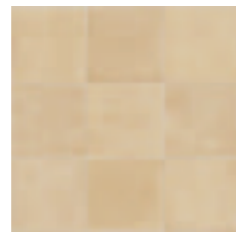
24554 001



Dark Grey

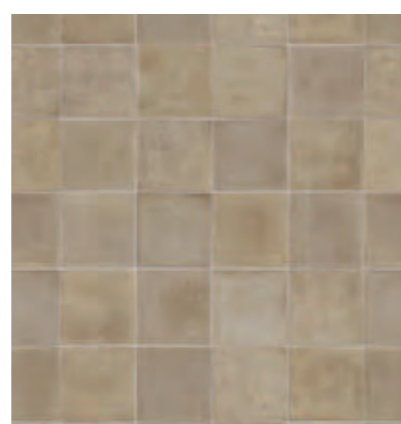
24554 002

Ceramica



Beige

24554 004



Grey

24554 005

Square



Black and White

24554 003

TECHNICAL DATA	STANDARDS	Aquarelle Floor
Classification		
Classification	ISO 10874 (EN 685) commercial	Class: 31
Characteristics		
Total thickness	ISO 24346 (EN 428)	1.50mm
Wear layer thickness	ISO 24340 (EN 429)	0.35mm
Total weight	ISO 23997 (EN 430)	2 400g/m ²
Wear layer reinforcement	—	—
Abrasion group Volume loss	EN 660-2	≤ 2.00mm ³
Abrasion	EN 13845 Annex D	—
Technical performances		
Residual indentation	Average measured value	≤ 0.10mm
	ISO 24343-1 (EN 433) requirement	
Dimensional stability	ISO 23999 (EN 434)	—
Curl resultant to heat	EN 424	≤ 8mm
Reaction to fire	EN 13501-1	B _{fl} s1 glued over any A2 _{fl} or A1 _{fl} substrate
Slip resistance	DIN 51130 EN 13893	R9 ≥ 0.3
Bare foot test	DIN 51097	—
Seam strength (N/50mm)	EN 684	Average value ≥ 240 N/50mm Individual values ≥ 180 N/50mm
Static electrical charge	EN 1815	< 2kV
Light fastness	EN ISO 105-B02	≥ 6
Chemical resistance	ISO 26987 (EN 423)	—
Fungi and bacteria resistance	ISO 846: Part C	—
Thermal resistance Underfloor heating	EN ISO 10456	0.02m ² K/W Suitable

The above information is subject to modifications for the benefit of further improvement (01/2014). For more detailed technical information, please contact Tarkett.

AQUARELLE FLOOR (3m)

Main Product Features

- Waterproof installation, ideal for wet domestic applications
- New 3m width rolls
- Unique wetroom concept: floors, walls and accessories available (compatible with Granit and/or Aquarelle Wall)
- Fresh colours and modern designs
- Hygienic and easy to maintain

Surface Treatment



Sustainability Tag



(1) Progressively for all our professional vinyl products during 2014

Logistics Information

Available in: 3m rolls
Rolls length: approx. 231m

Laying direction:

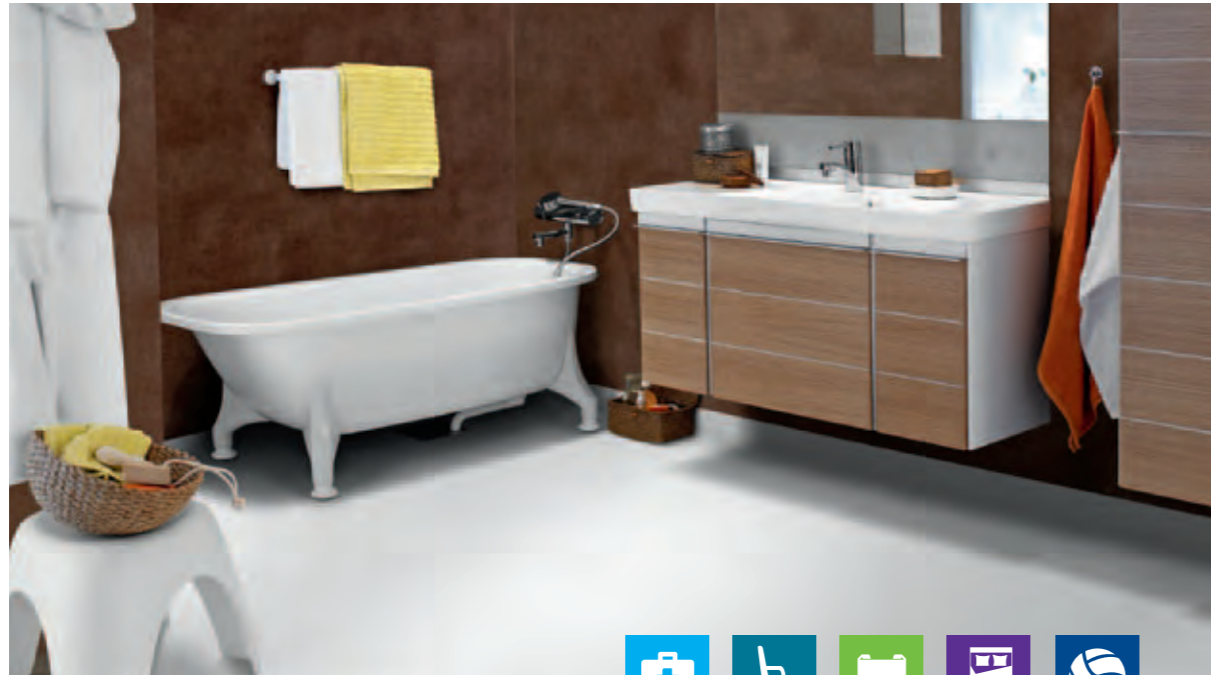


General Information



Play with the Room Designer

WETROOM WALLCOVERINGS



Wallcovering offer included into the complete wetroom concept, for wet environment in areas from healthcare to student halls and sports centres, to collective housing and hospitality environments

SENSORIAL BENEFITS

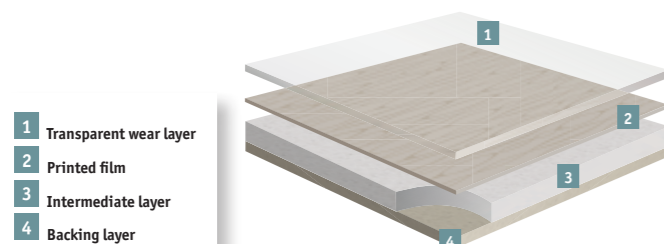
- Unique all-in-one concept: coordinated floors, walls and accessories offer
- 73 attractive and practical colours and designs
- Mix & match with other Tarkett ranges (Tapiflex & Acczent Evolution, Tapiflex & Acczent Excellence, ProtectWALL)

FUNCTIONAL BENEFITS

- Hygienic and clean
- Hard wearing and watertight installation
- Easy access and added value on safety (Class B or C floorings) for healthcare or aged care applications
- Easy to clean

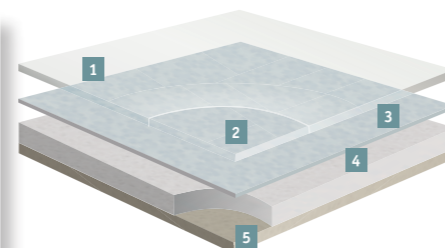
ENVIRONMENTAL BENEFITS

- Healthier interior with optimal indoor air quality
- 100% recyclable solution



AQUARELLE WALL HFS

- 1 TopClean XP Pur reinforced surface: Excellent resistance to scuffing, soiling and staining and easy maintenance.
- 2 Transparent wear layer
- 3 Printed film
- 4 Intermediate layer
- 5 Backing layer



AQUARELLE WALL

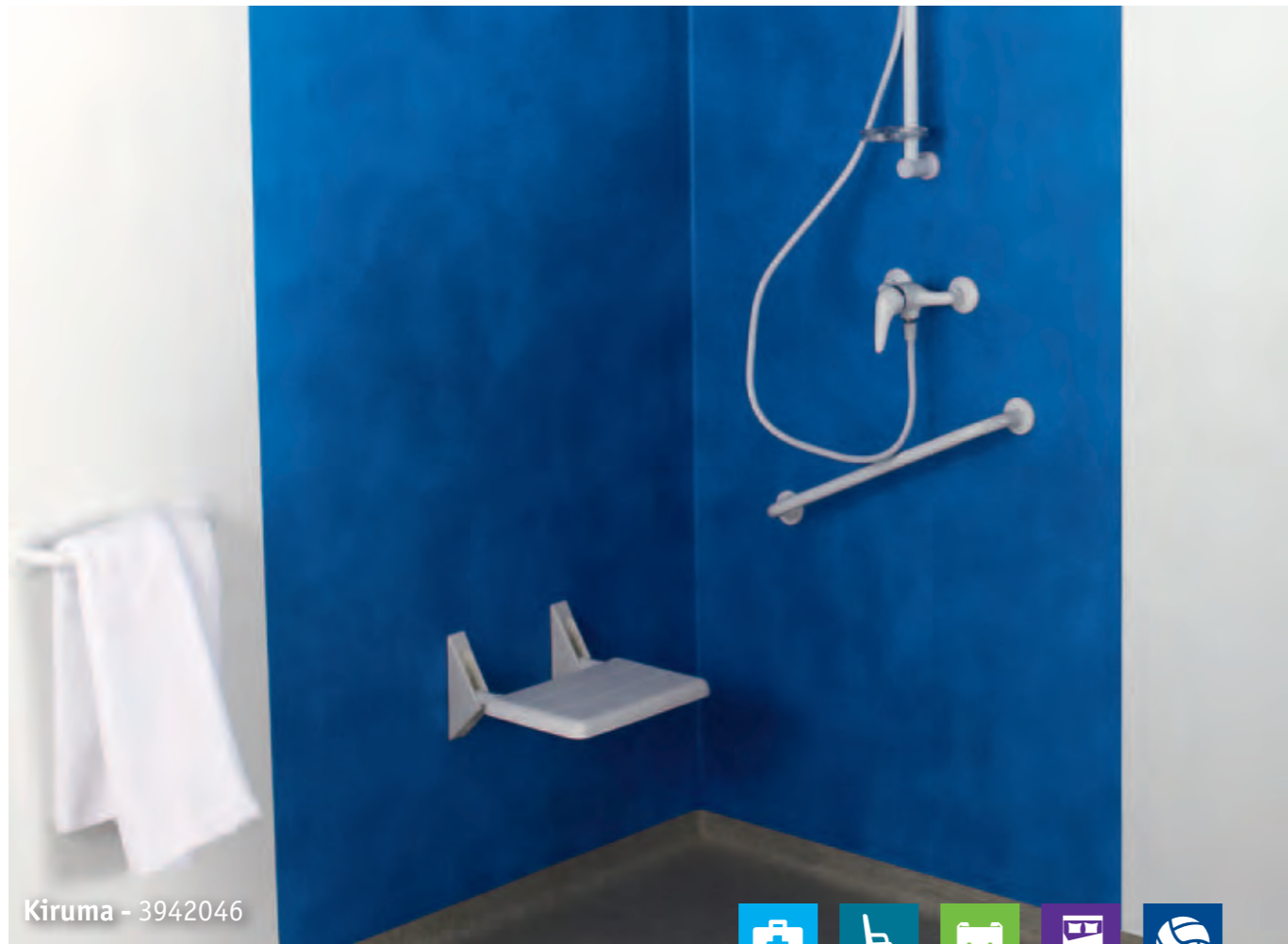
TECHNICAL DATA	STANDARDS	Aquarelle Wall HFS	Aquarelle Wall Aquarelle Wall Borders
Classification			
Classification	EN 259	Heavy duty	
Characteristics			
Total thickness	ISO 24346 (EN 428)	0.92mm	
Wear layer thickness	ISO 24340 (EN 429)	0.12mm	
Total weight	ISO 23997 (EN 430)	1 500g/m ²	
Technical performances			
Dimensional stability	ISO 23999 (EN 434)	Lengthwise: ≤ 0.80% Widthwise: ≤ 0.40%	
Reaction to fire	EN 13501-1	B-s2 d0 on gypsum plasterboard and on A1 or A2 substrate	C-s2 d0 on gypsum plasterboard and on A1 or A2 substrate
Seam strength	EN 684	≥ 150 N/50mm	
Acoustical absorption	NF EN ISO 354	0.05 (H)	
Chemical resistance	ISO 26987 (EN 423)	Good resistance	Very good resistance
Hygiene	—	Does not contribute to infection spreading	
Form of delivery			
Form of delivery	EN 259	Rolls: 35lm x 2m Borders: 49cm x 30-35m	Rolls: 35lm x 2m Borders: 49cm x 35m
Colours			
Colours	—	32 + 2 borders	27 + 20 borders

The above information is subject to modifications for the benefit of further improvement (01/2014). For more detailed technical information, please contact Tarkett.



Download the product offer

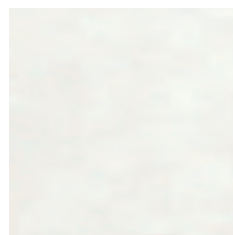
AQUARELLE WALL HFS



Kiruma - 3942046



Kiruma



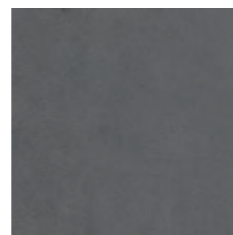
3942 037



3942 033



3942 043



3942 044



3942 046



3942 045



3942 034



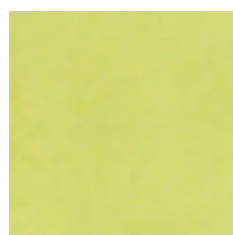
3942 041



3942 042



3942 048



3942 047



3942 040



3942 031



3942 027



3942 038

TECHNICAL DATA	STANDARDS	Aquarelle Wall HFS
Classification		
Classification	EN 259	Heavy duty
Characteristics		
Total thickness	ISO 24346 (EN 428)	0.92mm
Wear layer thickness	ISO 24340 (EN 429)	0.12mm
Total weight	ISO 23997 (EN 430)	1 500g/m ²
Technical performances		
Dimensional stability	ISO 23999 (EN 434)	Lengthwise: ≤ 0.80% Widthwise: ≤ 0.40%
Reaction to fire	EN 13501-1	B-s2 d0 on gypsum plasterboard and on A1 or A2 substrate
Seam strength	EN 684	≥ 150 N/50mm
Acoustical absorption	NF EN ISO 354	0.05 (H)
Chemical resistance	ISO 26987 (EN 423)	Good resistance
Hygiene	—	Does not contribute to infection spreading

The above information is subject to modifications for the benefit of further improvement (01/2014). For more detailed technical information, please contact Tarkett.

AQUARELLE WALL HFS

Main Product Features

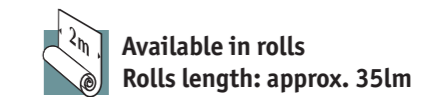
- Waterproof installation, ideal for wet commercial applications
- Unique wetroom concept: walls, floors, borders and accessories available in warm and vivid tones to coordinate with Optima Multisafe / Granit Multisafe / Granit Safe.T
- Fire resistant: Bs2 d0
- Hygienic and easy to maintain

Sustainability Tag



(1) Progressively for all our professional vinyl products during 2014

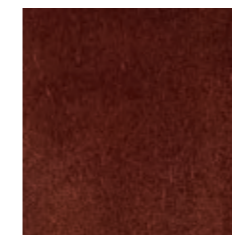
Logistics Information



Laying direction:



General Information

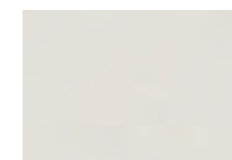


3942 039



3942 049

Aquarelle Wall HFS borders



25900 034



25900 037



Play with the Room Designer

AQUARELLE WALL HFS



Graphic Lines - 3942058



Vogue



3942 050



3942 051



3942 052

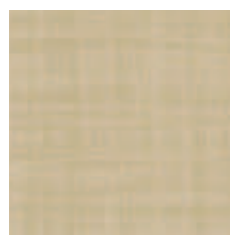


3942 053



3942 054

Graphic Lines



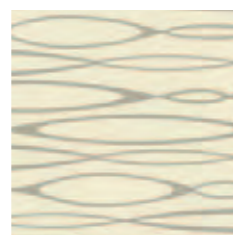
3942 055



3942 056



3942 057

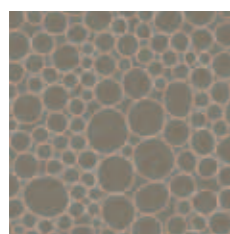


3942 058



3942 059

Bubbles



3942 061



3942 062



3942 063



3942 064

TECHNICAL DATA	STANDARDS	Aquarelle Wall HFS
Classification		
Classification	EN 259	Heavy duty
Characteristics		
Total thickness	ISO 24346 (EN 428)	0.92mm
Wear layer thickness	ISO 24340 (EN 429)	0.12mm
Total weight	ISO 23997 (EN 430)	1 500g/m ²
Technical performances		
Dimensional stability	ISO 23999 (EN 434)	Lengthwise: ≤ 0.80% Widthwise: ≤ 0.40%
Reaction to fire	EN 13501-1	B-s2 d0 on gypsum plasterboard and on A1 or A2 substrate
Seam strength	EN 684	≥ 150 N/50mm
Acoustical absorption	NF EN ISO 354	0.05 (H)
Chemical resistance	ISO 26987 (EN 423)	Good resistance
Hygiene	—	Does not contribute to infection spreading

The above information is subject to modifications for the benefit of further improvement (01/2014). For more detailed technical information, please contact Tarkett.

AQUARELLE WALL HFS

Main Product Features

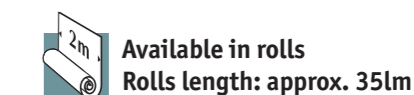
- Waterproof installation, ideal for wet commercial applications
- Unique wetroom concept: walls, floors, borders and accessories available in warm and vivid tones to coordinate with Optima Multisafe / Granit Multisafe / Granit Safe.T
- Fire resistant: B-S2 d0
- Hygienic and easy to maintain

Sustainability Tag



(1) Progressively for all our professional vinyl products during 2014

Logistics Information



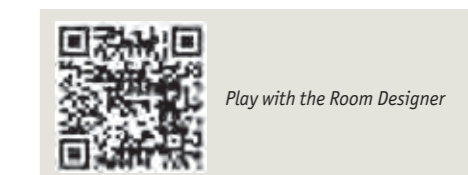
Laying direction:



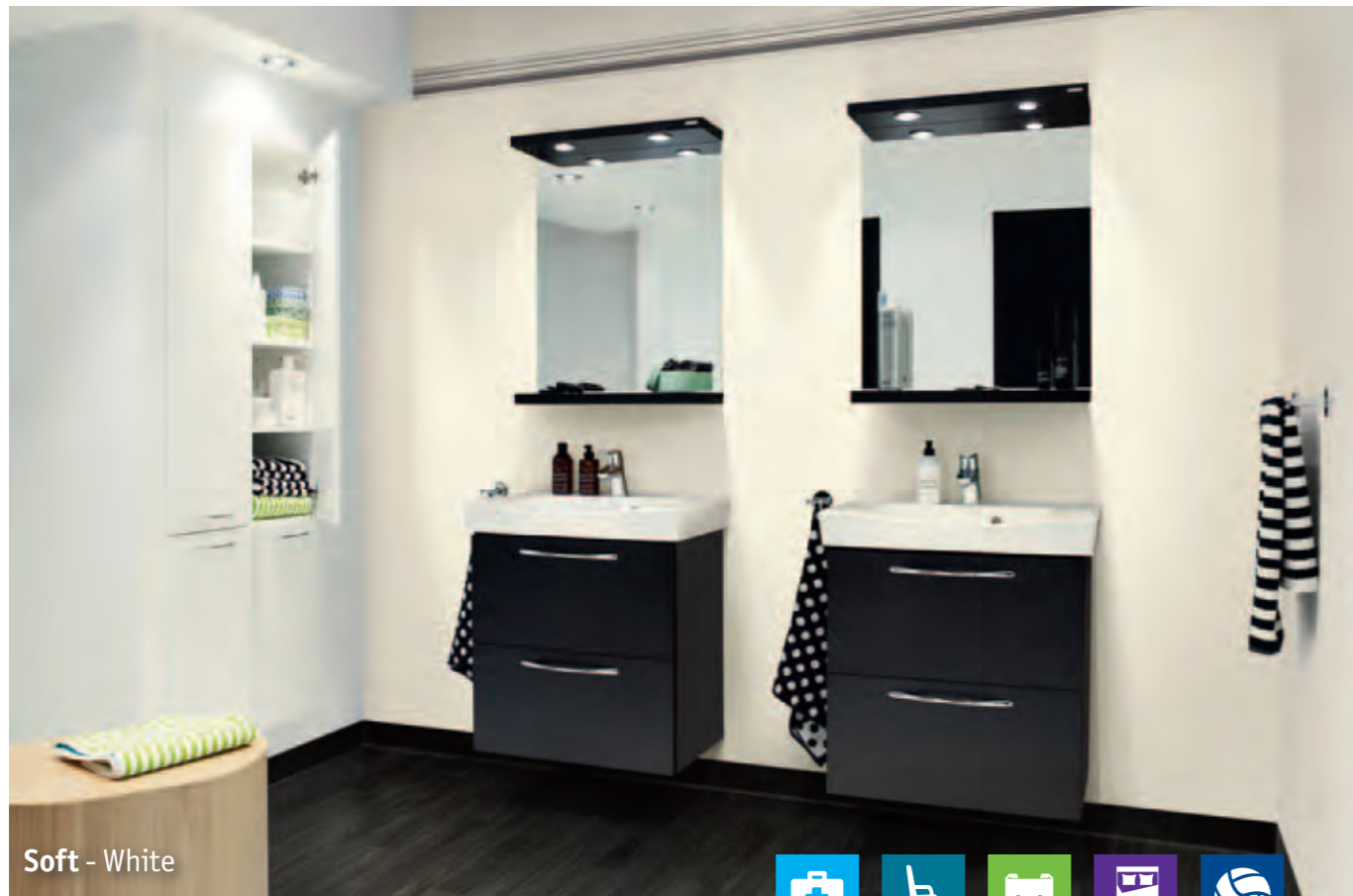
General Information



3942 049



AQUARELLE WALL



Soft - White



Soft



Variata



Aquastone



TECHNICAL DATA	STANDARDS	Aquarelle Wall
Classification		
Classification	EN 259	Heavy duty
Characteristics		
Total thickness	ISO 24346 (EN 428)	0.92mm
Wear layer thickness	ISO 24340 (EN 429)	0.12mm
Total weight	ISO 23997 (EN 430)	1 500g/m ²
Technical performances		
Dimensional stability	ISO 23999 (EN 434)	Lengthwise: ≤ 0.80% Widthwise: ≤ 0.40%
Reaction to fire	EN 13501-1	C-s2 d0 on gypsum plasterboard and on A1 or A2 substrate
Seam strength	EN 684	≥ 150 N/50mm
Acoustical absorption	NF EN ISO 354	0.05 (H)
Chemical resistance	ISO 26987 (EN 423)	Very good resistance
Hygiene	—	—

The above information is subject to modifications for the benefit of further improvement (01/2014). For more detailed technical information, please contact Tarkett.

AQUARELLE WALL

Main Product Features

- Waterproof installation, ideal for wet domestic applications
- Fresh colours and modern designs
- Unique wetroom concept: matching floors, walls, borders and accessories available (compatible with Granit and/or Aquarelle Floor)
- Hygienic and easy to maintain

Surface Treatment

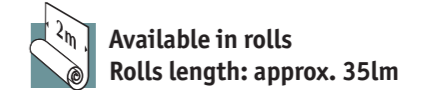


Sustainability Tag



(1) Progressively for all our professional vinyl products during 2014

Logistics Information



Laying direction: Soft Aquastone

General Information



Variata



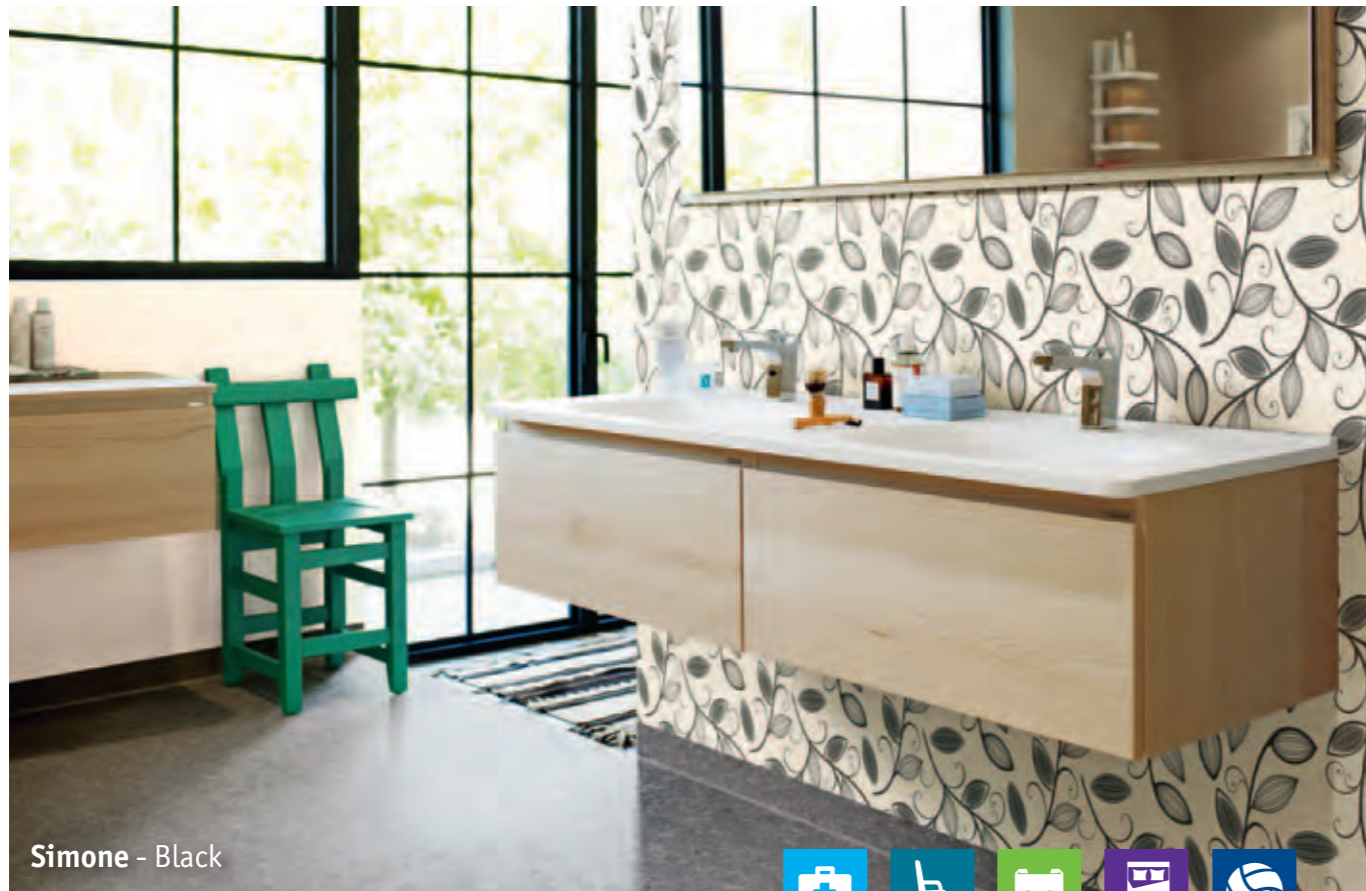
25903 102

Anthracite



Play with the Room Designer

AQUARELLE WALL



Simone - Black

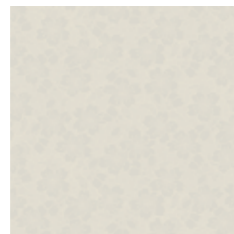


Kimono



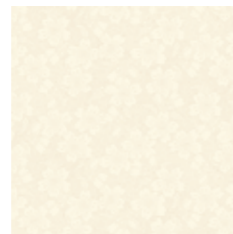
Blue

25903 106



Grey

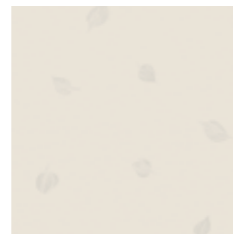
25903 107



White

25903 070

Leaf



Grey

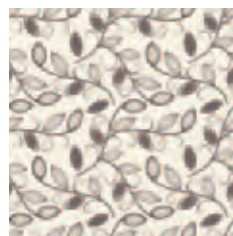
25903 043



Beige

25903 105

Simone



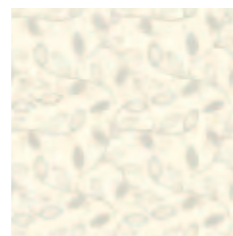
Black

25903 118



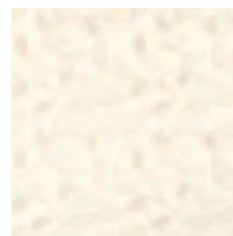
Silver

25903 119



Grey

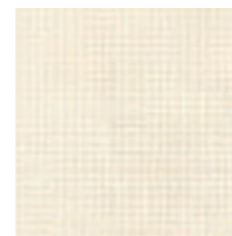
25903 120



White

25903 121

Quadros



White

25903 122



Light Grey

25903 123



Dark Grey

25903 124

Brick



Grey

25903 072



Anthracite

25903 109



Beige

25903 110

TECHNICAL DATA	STANDARDS	Aquarelle Wall
Classification		
Classification	EN 259	Heavy duty
Characteristics		
Total thickness	ISO 24346 (EN 428)	0.92mm
Wear layer thickness	ISO 24340 (EN 429)	0.12mm
Total weight	ISO 23997 (EN 430)	1 500g/m ²
Technical performances		
Dimensional stability	ISO 23999 (EN 434)	Lengthwise: ≤ 0.80% Widthwise: ≤ 0.40%
Reaction to fire	EN 13501-1	C-s2 d0 on gypsum plasterboard and on A1 or A2 substrate
Seam strength	EN 684	≥ 150 N/50mm
Acoustical absorption	NF EN ISO 354	0.05 (H)
Chemical resistance	ISO 26987 (EN 423)	Very good resistance
Hygiene	—	—

The above information is subject to modifications for the benefit of further improvement (01/2014).
For more detailed technical information, please contact Tarkett.

AQUARELLE WALL

Main Product Features

- Waterproof installation, ideal for wet domestic applications
- Fresh colours and modern designs
- Unique wetroom concept: matching floors, walls, borders and accessories available (compatible with Granit and/or Aquarelle Floor)
- Hygienic and easy to maintain

Surface Treatment

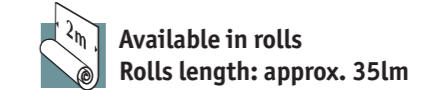


Sustainability Tag



(1) Progressively for all our professional vinyl products during 2014

Logistics Information



Laying direction:



General Information



Circle



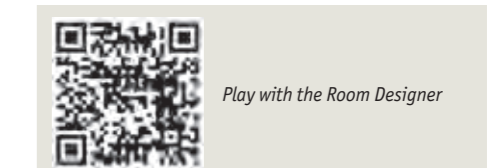
Anthracite

25903 108

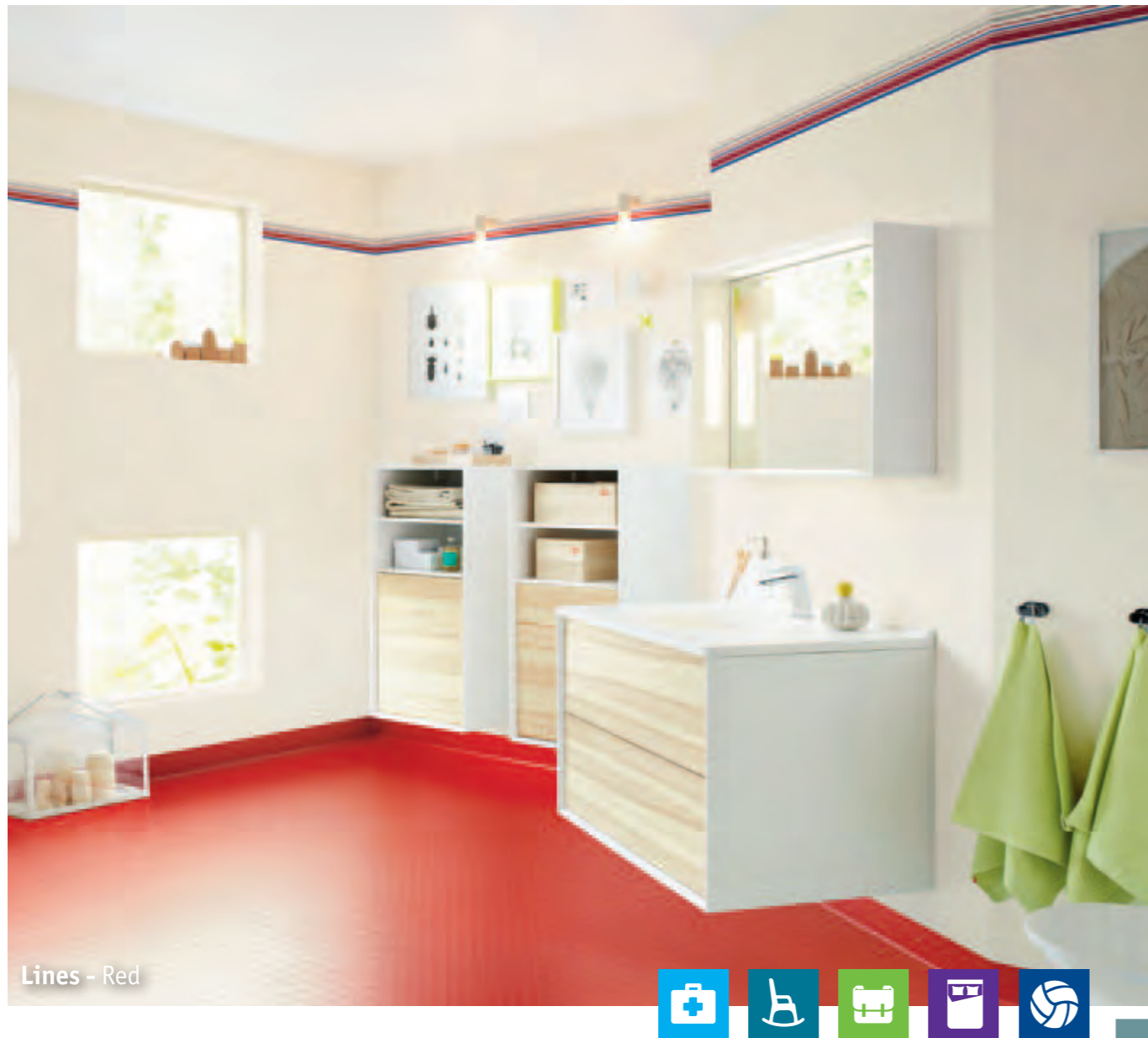


White

25903 071

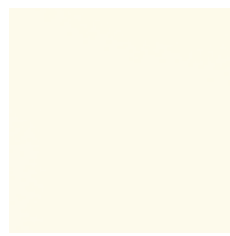


AQUARELLE WALL BORDERS



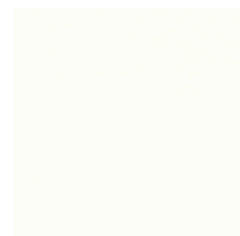
Lines - Red

Soft



White

25906 034



Super White

3943 059

Oak



White

25906 059



Black

25906 060

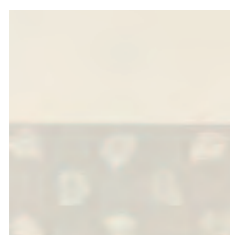
Quadros



Grey

25906 127

Leaf



Grey

25906 125



Beige

25906 126

Lines



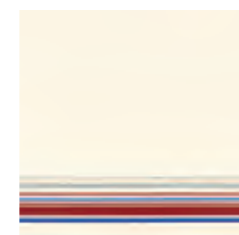
Grey

25906 128



Turquoise

25906 129



Red

25906 130

TECHNICAL DATA	STANDARDS	Aquarelle Wall Borders
Classification		
Classification	EN 259	Heavy duty
Characteristics		
Total thickness	ISO 24346 (EN 428)	0.92mm
Wear layer thickness	ISO 24340 (EN 429)	0.12mm
Total weight	ISO 23997 (EN 430)	1 500g/m ²
Technical performances		
Dimensional stability	ISO 23999 (EN 434)	Lengthwise: ≤ 0.80% Widthwise: ≤ 0.40%
Reaction to fire	EN 13501-1	C-s2 d0 on gypsum plasterboard and on A1 or A2 substrate
Seam strength	EN 684	≥ 150 N/50mm
Acoustical absorption	NF EN ISO 354	0.05 (H)
Chemical resistance	ISO 26987 (EN 423)	Very good resistance
Hygiene	—	—

The above information is subject to modifications for the benefit of further improvement (01/2014). For more detailed technical information, please contact Tarkett.

AQUARELLE WALL BORDERS

Main Product Features

- Matching borders with Aquarelle Wall ranges to upgrade your installation
- Waterproof installation, ideal for wet domestic applications
- Unique wetroom concept: matching floors, walls, and accessories available

Surface Treatment



Sustainability Tag



(1) Progressively for all our professional vinyl products during 2014

Logistics Information



Available in rolls
Rolls length: approx. 35lm

Oak



Grey

25906 131