



MIPOLAM ELEGANCE

gerflor.com

FLOORING, ESD & SHOWER SYSTEM



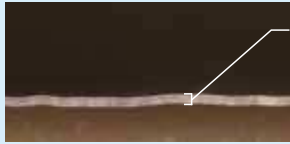
Gerflor[®]
theflooringgroup

evercare™ SURFACE TREATMENT

EXCLUSIVE PATENTED TECHNOLOGY BY GERFLOR

THE BEST CHEMICAL STAIN RESISTANCE SURFACE TREATMENT

evercare™ BY GERFLOR: Treatment durability



Gerflor:
Even thickness



100% non-porous surface
Water-repellent effect

Other treated floor covering



Competitor:
Missing treatment
and uneven
thickness



Non-treated product

SIMPLE & EASY STAIN REMOVAL



USER'S BENEFITS

Easy & cost-effective maintenance

Stain barrier

No wax for life

Chemical resistance



Mipolam Elegance

MIPOLAM ELEGANCE

Performances and benefits



Homogeneous vinyl flooring suitable for heavy duty traffic areas



Non-directional design available in 33 references



Available in 2 m sheet (also available in tiles 608 x 608 mm on demand)



Excellent abrasion resistance



Matt finish surface: enhanced design & colour, long lasting appearance



Highly flexible homogeneous flooring, easy to install & weld

Don't forget our complementary ranges!



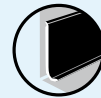
Handrails



Wall Coverings & Protections



Entrance mats



Skirtings & Profiles

MIPOLAM ELEGANCE EL5



CONDUCTIVE FLOORING

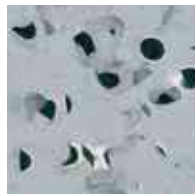
Conductive flexible homogeneous vinyl floorcovering with carbon encapsulated granules available in sheet. Its **conductive backing** ensures optimal and consistent conductive properties.

It acts as a continuous conductive $10^4 \leq R_t \leq 10^6$ and has permanent antistatic properties (< 100 V).

Mipolam Elegance EL5 is treated with **Evercare™**.



0350 Light Grey



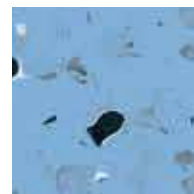
0352 Grey



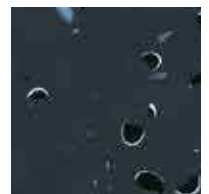
0353 Beige



0355 Green



0354 Blue



0351 Black

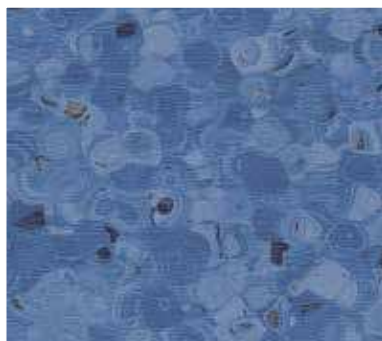


For further details, see our ESD Solutions documentation on www.gerflor.com



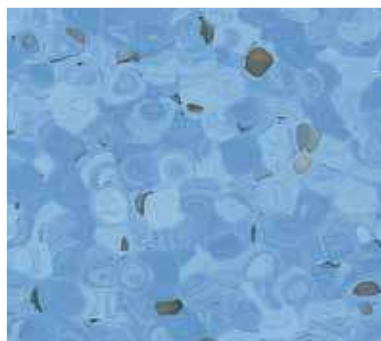
Mipolam Elegance EL5

MIPOLAM ELEGANCE



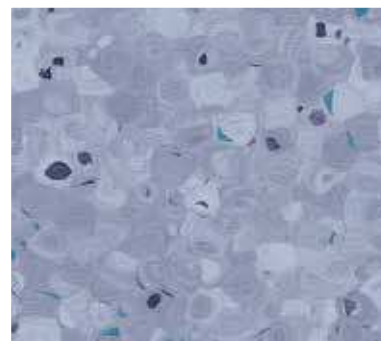
0349 Bluecrop

NCS: 4030-R80B / LRV: 17.8



0348 Bluetta

NCS: 2040-R90B / LRV: 34.0



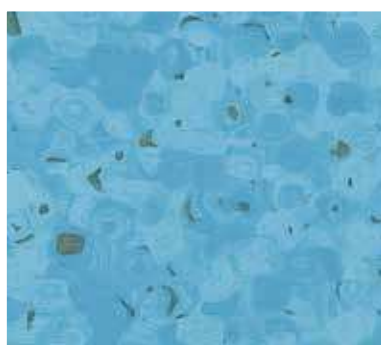
0319 Quetsche

NCS: 3020-R80B / LRV: 31.0



0342 Blueberry

NCS: 2050-B / LRV: 25.8



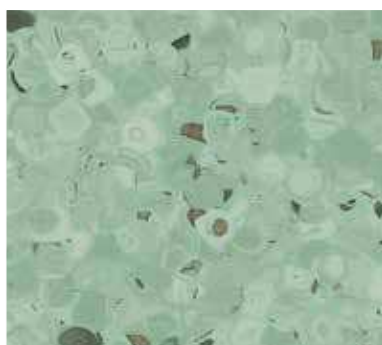
0341 Bilberry

NCS: 2040-B10G / LRV: 34.8



0340 Jambolan

NCS: 1030-B30G / LRV: 45.6



0339 Apple

NCS: 2020-G10Y / LRV: 40.6



0338 Kiwi

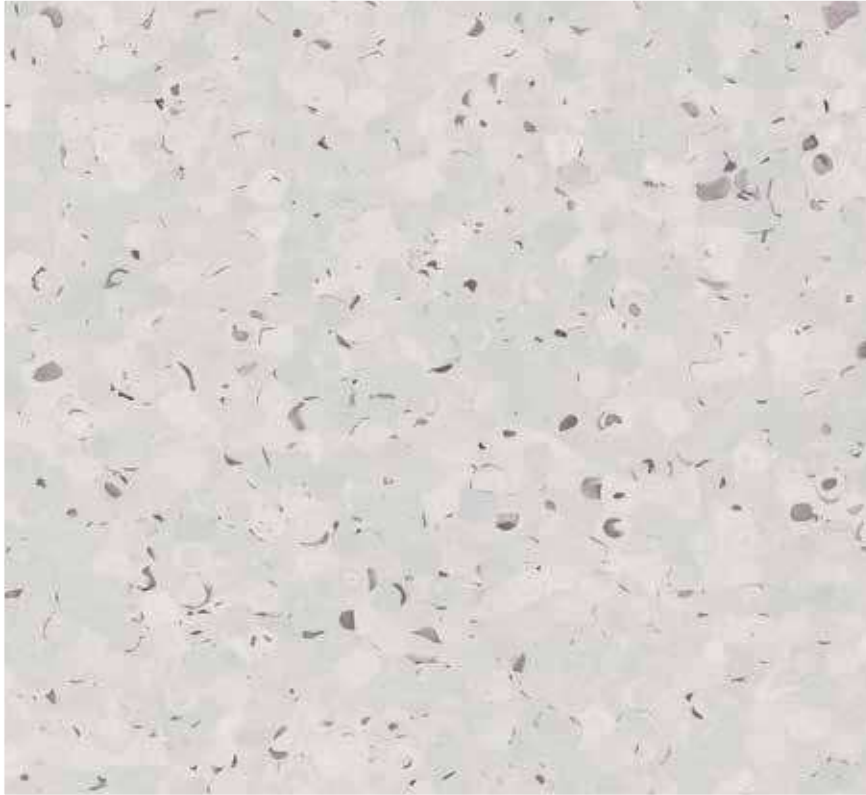
NCS: 1040-G50Y / LRV: 47.9



0703 Lime

NCS: 1030-G90Y / LRV: 58.5





0696 Ginger
NCS: 1502-B / LRV: 59.7



0347 Mangoustan
NCS: 1005-Y60R / LRV: 67.9



0705 Patisson
NCS: 1502-Y / LRV: 64.4



0343 Pecan
NCS: 2500-N / LRV: 46.9



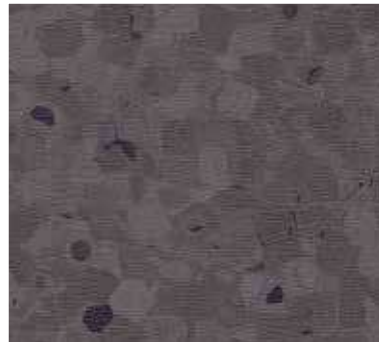
0318 Grape
NCS: 2005-R80B / LRV: 51.4



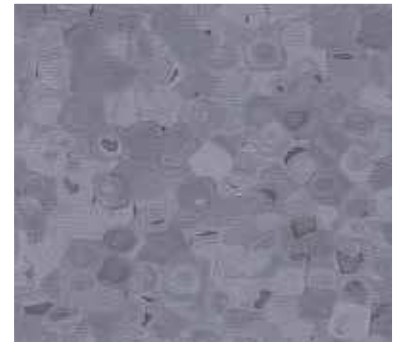
0697 Greenstone
NCS: 3005-R80B / LRV: 37.1



0321 Olive
NCS: 8502-B / LRV: 6.9

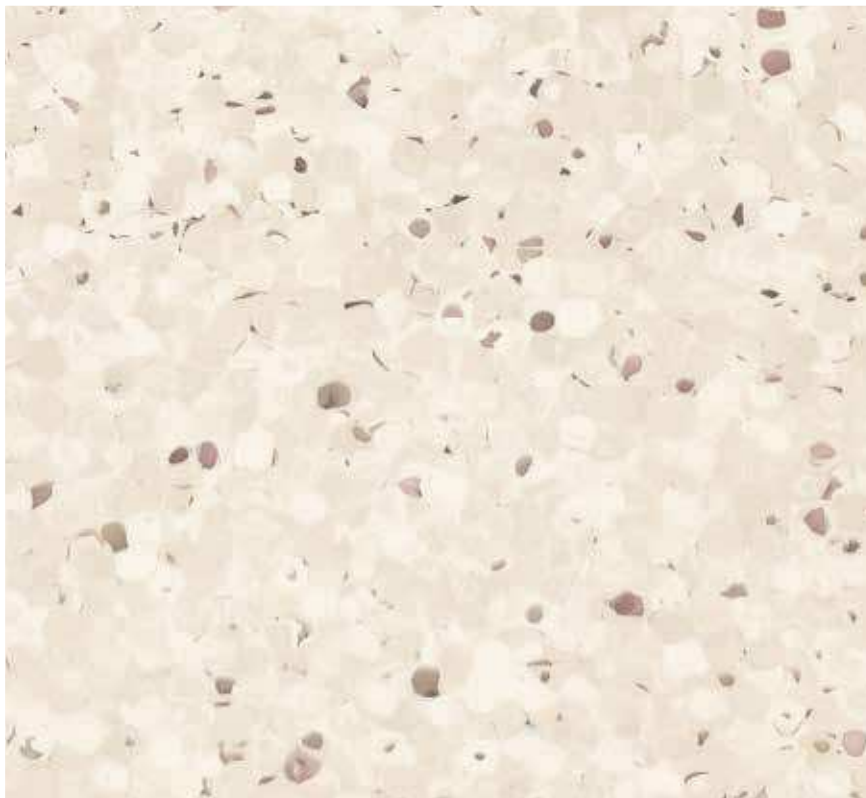


0344 Nutmeg
NCS: 7000-N / LRV: 11.8



0704 Raspberry Grey
NCS: 5005-R80B / LRV: 20.3

MIPOLAM ELEGANCE



0322 Jicama
NCS: 1505-Y20R / LRV: 67.8



0328 Almond
NCS: 1505-Y30R / LRV: 61.0



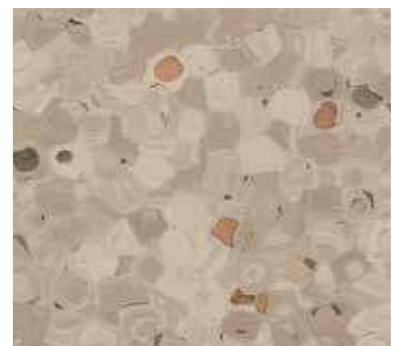
0323 Nut
NCS: 2005-Y20R / LRV: 50.6



0698 Cacao
NCS: 6010-Y30R / LRV: 17.7



0329 Hazelnut
NCS: 3010-Y40R / LRV: 36.4



0324 Chestnut
NCS: 3005-Y20R / LRV: 37.2





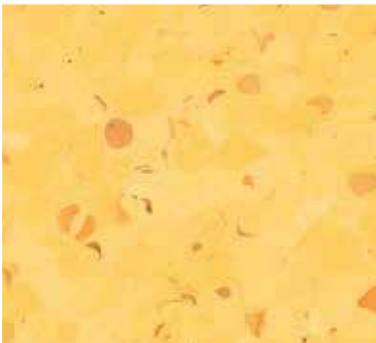
0336 Acerola
NCS: 2570-Y80R / LRV: 12.6



0702 Kumquat
NCS: 3060-Y60R / LRV: 19.8



0700 Melon
NCS: 1040-Y30R / LRV: 48.2



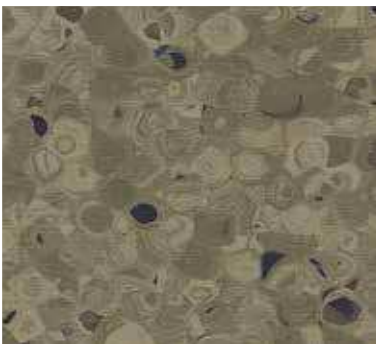
0333 Ananas
NCS: 0550-Y10R / LRV: 57.9



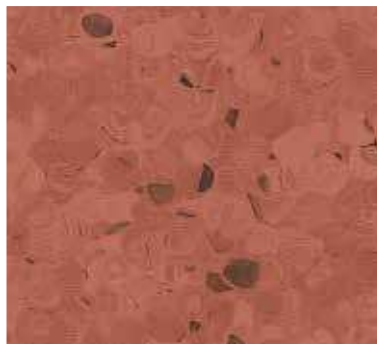
0699 Banana
NCS: 0520-Y20R / LRV: 64.3



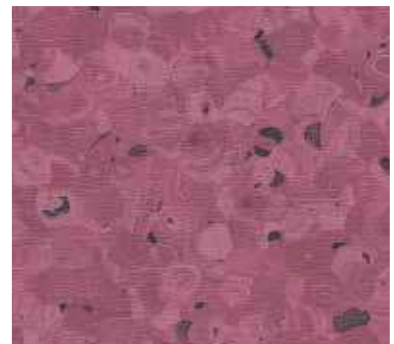
0327 Pear
NCS: 1015-Y30R / LRV: 55.0



0326 Jojoba
NCS: 5020-G70Y / LRV: 18.9



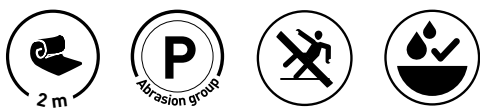
0330 Litchi
NCS: 4030-Y80R / LRV: 17.5



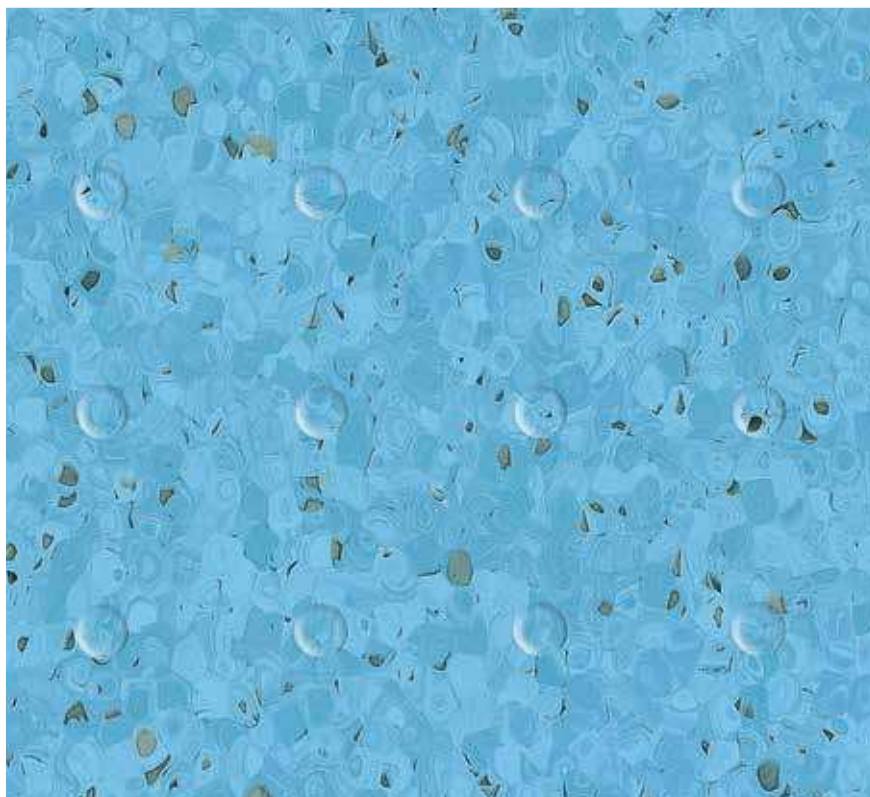
0331 Plum
NCS: 4040-R10B / LRV: 15.0



ELEGANCE SD



Flooring for Shower System



0341 Bilberry
NCS: 2040-B10G / LRV: 34.8



0705 Patisson
NCS: 1502-Y / LRV: 64.4



0322 Jicama
NCS: 1505-Y20R / LRV: 67.8



0704 Raspberry Grey
NCS: 5005-R80B / LRV: 20.3



0338 Kiwi
NCS: 1040-G50Y / LRV: 47.9



0329 Hazelnut
NCS: 3010-Y40R / LRV: 36.4



0333 Ananas
NCS: 0550-Y10R / LRV: 57.9



0700 Melon
NCS: 1040-Y30R / LRV: 48.2



ELEGANCE SD

The bathroom is coordinated to the room with 8 anti-slip references complying with bare foot standard.

Elegance SD consists of a 2.4 mm (on grain side) monolayer sheet with the design through the whole thickness and a specific embossing for use with bare foot (DIN 51 097 - Class A).



0341 Bilberry



0705 Patisson



0322 Jicama



0704 Raspberry Grey



0338 Kiwi



0329 Hazelnut



0333 Ananas



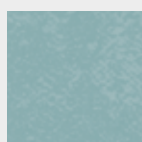
0700 Melon

SHOWER SYSTEM

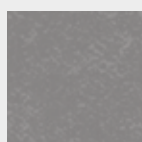
Floor / Wall & Accessories system for bathroom.

Possibility to combine with Mural Calypso wall covering to create calm, warm, Zen or light ambiances.

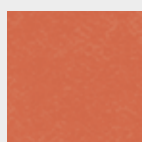
Mural Calypso wall covering range:



7420 Lagoon



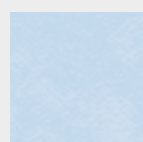
7751 Steel



7323 Ochre



7201 Moonlight



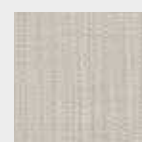
7408 Skyline



7734 Manhattan



7744 Nordic Milk



7736 Fabric Wool

...

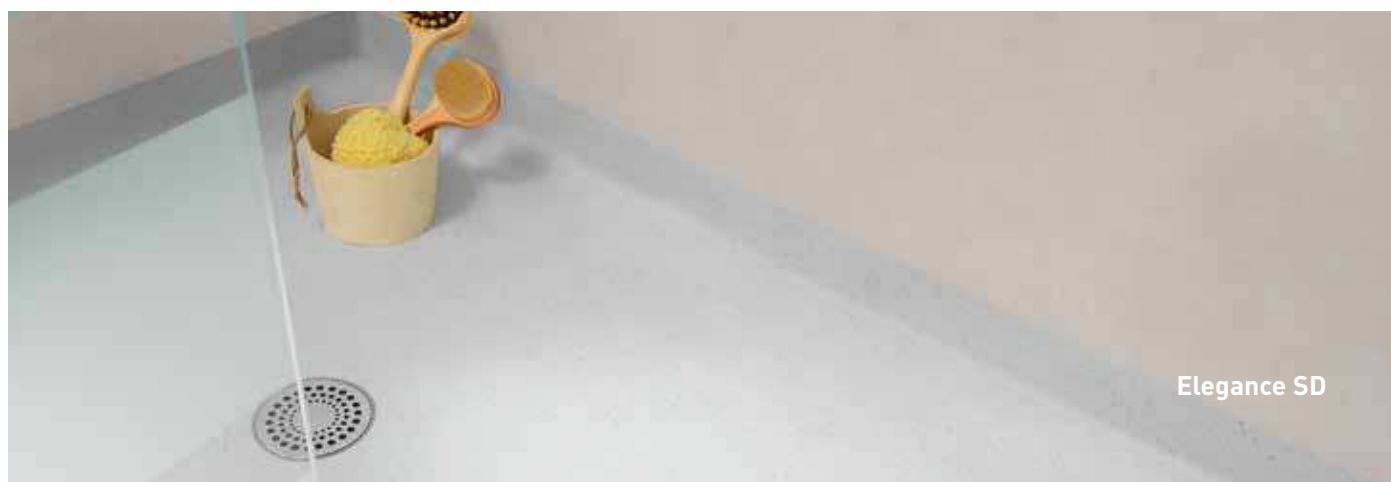


Accessories for Taradouche Shower System

- ① Cove former for internal wall angles CA 12
- ② Perfect WR 41 wall weld
- ③ Diminishing profile Cove former
- ④ Shower threshold
The threshold has been developed in 3 colours ● grey, ○ beige and ● blue in order to answer to the specific requirement of Alzheimer units (no contrast)
- ⑤ Drains
PVC drain with inox grid
- ⑥ Tarafoam: acoustic insulation sub-layer



For further details, see our Taradouche Shower System brochure on www.gerflor.com



Elegance SD

	Mipolam Elegance	Elegance SD	Mipolam Elegance EL5
--	------------------	-------------	----------------------

DESCRIPTION

Total thickness	EN ISO 24346 (EN 428)	mm	2.00	2.40	2.00
	ASTM F386-02	inch	0.08	-	-
Thickness of wearlayer	EN ISO 24340 (EN 429)	mm	-	2.40	-
Weight	EN ISO 23997 (EN 430)	g/sq.m	2850	3100	3060
Width/length of sheet	EN ISO 24341 (EN 426)	cm/lm	200 / 20	200 / 20	200 / 20
	-	feet - inch	6'6" / 66'	-	-
Coverage / roll	-	sq.m	40	-	-
	-	sq.ft	430.56	-	-
Tile size	EN ISO 24342 (EN 427)	mm	608 x 608 ⁽¹⁾	-	-
Number of tiles per package	-	-	20	-	-

CLASSIFICATION

Norm/product specification	-	-	EN ISO 10581 (EN 649)	EN ISO 10581 (EN 649)	EN ISO 10581 (EN 649)
	ASTM F 1913-04	-	compliant	-	-
European classification	EN ISO 10874 (EN 685)	class	34-43	34-43	34-43
Fire rating	EN 13501-1	class	Bfl - s1	Bfl - s1	Bfl - s1
	ASTM E648-08	class	Class I	-	-
Electrical resistance ⁽³⁾	EN 1081	Ohm	-	-	10 ⁴ ≤ Rt ≤ 10 ⁶
	IEC 61340-4-1	Ohm	-	-	≤ 10 ⁹
	IEC 61340-4-5	Ohm	-	-	≤ 10 ⁹
	ANSI / ESD-STM 7.1	Ohm	-	-	≤ 10 ⁹
Static electrical propensity	EN 1815	kV	< 2	< 2	< 2
	IEC 61340-4-5	V	-	-	< 100 ⁽⁴⁾
Protection against electrostatic discharges	ESD 20.20	-	-	-	OK
	IEC 61340-5-1	-	-	-	OK
Slip resistance wet : ramp test with oil	DIN 51130	class	-	R9	R9
Slip resistance wet : barefoot	DIN 51097	class	-	A	-
Water tightness	EN 13553	-	-	OK	-

PERFORMANCE

Wear resistance	EN 660.2	mm ³	≤ 2.0	< 4.0	< 4.0
Wear group	NF 189	group	T	P	P
Type binder content	ISO 10581	type	I	I	I
Dimensional stability	EN ISO 23999 (EN 434)	%	Sheet ≤ 0.40 - Tile ≤ 0.25	≤ 0.40	≤ 0.40
Impact sound insulation	EN ISO 717-2	dB	5	-	-
Residual indentation	EN ISO 24343-1 (EN 433)	mm	≈ 0.02	≤ 0.10	≈ 0.02
Residual indentation (measure)	-	mm	-	≈ 0.03	-
Castor chair test (type W)	ISO 4918 (EN 425)	-	OK	-	OK
Thermal conductivity	EN ISO 10456 (EN12524)	W/(m.K)	0.25	0.25	0.25
Colour fastness	EN 20 105 - B02	degree	≥ 6	≥ 6	≥ 6
Surface treatment	-	-	Evercare™	-	Evercare™
Chemical resistance	EN ISO 26987 (EN 423)	class	OK	OK	OK
Anti-bacterial activity [E. coli - S. aureus - MRSA] ⁽²⁾	ISO 22196	-	> 99 % inhibits growth	-	-

ENVIRONMENT / INDOOR AIR QUALITY

TVOC after 28 days	ISO 16000-6	µg/m ³	< 10	< 10	< 10
Certification	-	-	Floorscore®	Floorscore®	Floorscore®

CE marking

CE	EN 14041	-	
	-	-	

(1) Products available in tiles for a minimum quantity order of 500 sq.m

(2) The implementation of an effective cleaning method is the best defence against infection

(3) Measured before installation - (4) Measured with ESD shoes (ABEBA and Uvex)

Product description and technical data sheet available in various languages. See our Gerflor Country websites.

Installation and Maintenance Guidelines, Complementary ranges available on our Gerflor website.



Rubber leaves indelible stains on vinyl floorings: do not use mats with rubber backing and replace tubular furniture feet with those made of PVC or polyamide. Place mats of sufficient length at entrances to reduce outside sources of dirt.

IMPORTANT: The information contained in this document is valid from 01/05/2018 and is subject to change at any time without notice. In the context of constantly changing technology, our customers are responsible, prior to any use, for checking with us that this document is the version in force.

MIPOLAM ELEGANCE, LESS SPEAKING FOR MORE ACTIONS

<p>COMPOSITION 100% REACH compliant</p>	<p>INDOOR AIR QUALITY 100 times lower than norm requirements (TVOC < 10 µg/m³ after 28 days)</p>	<p>RECYCLED CONTENT 25%</p>	<p>RECYCLABILITY 100%</p>	<p>LCA Eco-designed according to a product specific life cycle analysis</p>	<p>WELLNESS Walking comfort < 75 dB</p>
--	---	--	--------------------------------------	--	---