



LINOLEUM

[gerflor.com](http://gerflor.com)



**Gerflor**<sup>®</sup>  
theflooringgroup



**Organic**

**Bio degradable**

**Wellness**

**ECO-FRIENDLY  
PRODUCT**

# DLW LINOLEUM

## A NATURAL CHOICE



Organic product



High pedestrian and mechanical traffic resistance



Large choice of colors and designs

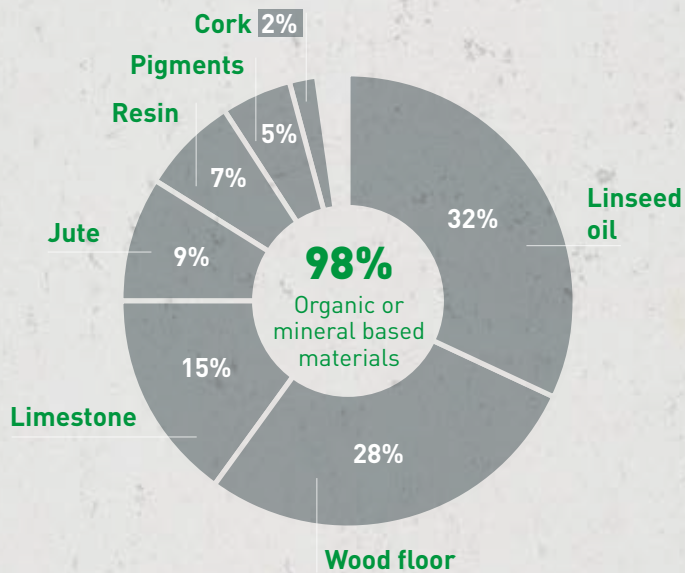


Acoustic comfort up to 18dB

Linoleum is the only resilient flooring made from **renewable** and **bio degradable** raw materials.

DLW linoleum is made of 98% **organic** or **mineral based** materials, is natural, warm to the feet, **antibacterial** thanks to linseed oil and has an almost **neutral CO<sub>2</sub> balance**.

**Healthy** and **durable**, DLW linoleum is certified by numerous eco labels and is a long time preferred solution in sensitive applications, such as kindergartens, schools and hospitals.



## LINOLEUM **COMPACT**

Marmorette	06
Colorette	10
Lino Art Star	12
Lino Art Metallic	12
Lino Art Nature	12
Lino Art Urban	13
Uni Walton	14
Granette	14

## LINOLEUM **ACOUSTIC**

Marmorette Acoustic	20
Marmorette AcousticPlus	20
Colorette AcousticPlus	21
Lino Art Nature AcousticPlus	21

## LINOLEUM **TECHNIC**

Linodur	25
Linodur LCH	25
Marmorette LCH	25

## LINOLEUM **SPORT**

Linodur Sport	30
Nature Sport	30
Colorette Sport	31

FINISHES	35
----------	----

CLEANING LINOLEUM FLOORS	38
-----------------------------	----

# LINOLEUM COMPACT



# LINOLEUM COMPACT

## MARMORETTE



2.5mm

Prod. code:  
121

All colors

● Thickness  
2.0mm

Prod. code:  
821

▲ Thickness  
3.2mm

Prod. code:  
521



2.5mm

Prod. code:  
125

All colors



NCS: S 2502-R

0155 Smoked Pearl



NCS: S 4005-R80B

0055 Ash Grey ●▲



NCS: S 3000-N

0052 Flint Grey



NCS: S 4502-R

0056 Foggy Blue ●▲



NCS: S 5502-B

0050 Quartz Grey ●▲



NCS: S 4502-B

0053 Ice Grey ●▲



NCS: S 6502-Y

0158 Tabac Grey



NCS: S 7502-B

0059 Plumb Grey ●▲



NCS: S 5500-N

0159 Alumino Grey



NCS: S 8502-Y

0180 Carbon Grey



NCS: S 8000-N

0096 Midnight Grey



NCS: S 8000-N

0160 Industrial Grey ●



NCS: S 2050-Y30R

0173 Melon Orange



NCS: S 2020-Y30R

0098 Desert Beige ●



NCS: S 1510-Y20R

0145 Banana White



NCS: S 2010-Y10R

0045 Sand Beige ●



NCS: S 3050-Y40R

0073 Spicy Orange



NCS: S 2040-Y10R

0076 Pale Yellow



NCS: S 2020-Y20R

0040 Light Sahara ●



NCS: S 3010-Y30R

0146 Beeswax Beige



NCS: S 2050-Y50R

0174 Physalis Orange



NCS: S 1050-Y20R

0072 Golden Yellow



NCS: S 2030-Y30R

0070 Rocky Brown ●▲



NCS: S 5010-Y70R

0003 Dark Brown



NCS: S 2075-Y60R

0117 - Mandarin Orange



NCS: S 1080-Y20R

0172 Papaya Orange



NCS: S 4030-Y30R

0140 Leather Brown






NCS: S 8010-Y30R

0108 Mokka Brown

# LINOLEUM COMPACT

## MARMORETTE

 Prod. code: 121	 2.5mm All colors Prod. code: 121	● Thickness 2.0mm ▲ Thickness 3.2mm Prod. code: 821	▲ Thickness 3.2mm Prod. code: 521	 2.5mm All colors Prod. code: 125
---	--	--	--	--



NCS: S 3040-Y90R

0008 Chestnut



NCS: S 2030-Y50R

0075 Light Aurora



NCS: S 4020-R90B

0023 Dusty Blue ●▲



NCS: S 4040-R80B

0049 Royal Blue ▲



NCS: S 2060-Y90R

0048 Cranberry Red



NCS: S 2050-Y60R

0019 Sunset Orange



NCS: S 5020-R90B

0022 Autumn Blue ▲



NCS: S 5040-R80B

0148 Ink Blue



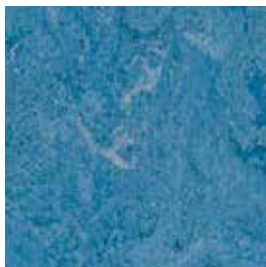
NCS: S 4050-Y90R

0018 Lobster Red



NCS: S 3050-Y60R

0115 Rusty Orange



NCS: S 4030-R90B

0026 Sky Blue



NCS: S 7020-R80B

0149 Dark Blue



NCS: S 1580-Y80R

0018 Chili Red



NCS: S 3050-Y60R

0019 Terracotta





NCS: S 2020-G50Y

0130 Antique Green



NCS: S 3020-G10Y

0020 Mild Green



NCS: S 3030-G30Y

0100 Frog Green



NCS: S 4020-G10Y

0043 Leaf Green



NCS: S 4020-B50G

0099 Grey Turquoise



NCS: S 2060-G60Y

0132 Lime Green



NCS: S 6030-G30Y

0041 Avocado Green

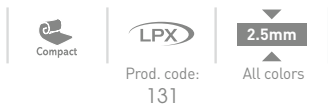


NCS: S 4050-B40G

0129 Curacao Petrol

# LINOLEUM COMPACT

## COLORETTE



NCS: S 2500-N

0052 Oxid Grey



NCS: S 6010-Y10R

0043 Light Mud



NCS: S 1070-Y

0001 Banana Yellow



NCS: S 0565-G50Y

0132 Lime Green



NCS: S 3502-B

0058 Aluminium Grey



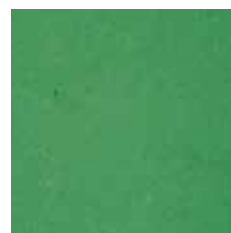
NCS: S 3005-Y20R

0012 Light Beige



NCS: S 1070-Y30R

0171 Sunrise Orange



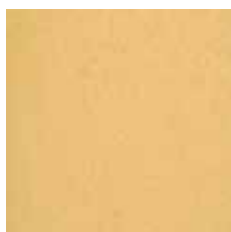
NCS: S 3050-G20Y

0006 Vivid Green



NCS: S 5502-B

0059 Stone Grey



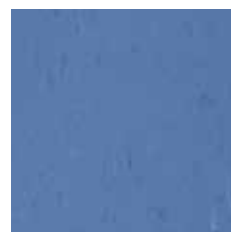
NCS: S 2030-Y20R

0071 Straw Beige



NCS: S 2070-Y50R

0170 Kumquat Orange



NCS: S 3040-R80B

0004 Bluebird



NCS: S 6502-B

0080 Elephant Grey



NCS: S 2040-Y20R

0073 Sand Yellow



NCS: S 0580-Y90R

0118 Power Red



NCS: S 2060-B

0123 Poppy Blue



NCS: S 8502-B

0081 Private Black



NCS: S 2050-Y60R

0016 Deep Orange



NCS: S 2050-R30B

0110 Cadillac Pink

# COLORETTE



NCS: S 2500-N

0052 Oxid Grey



NCS: S 6010-Y10R

0043 Light Mud



NCS: S 1070-Y

0001 Banana Yellow



NCS: S 0565-G50Y

0132 Lime Green



NCS: S 3502-B

0058 Aluminium Grey



NCS: S 3005-Y20R

0012 Light Beige



NCS: S 1070-Y30R

0171 Sunrise Orange



NCS: S 2050-R30B

0110 Cadillac Pink



NCS: S 5502-B

0059 Stone Grey



NCS: S 6502-B

0080 Elephant Grey



NCS: S 2070-Y50R

0170 Kumquat Orange



NCS: S 0580-Y90R

0118 Power Red




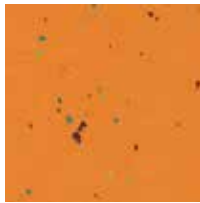
NCS: S 8502-B

0081 Private Black

# LINOLEUM COMPACT

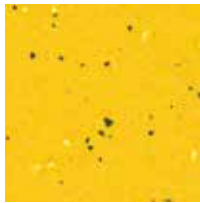
## LINO ART STAR

    
Prod. code: 144  
All colors



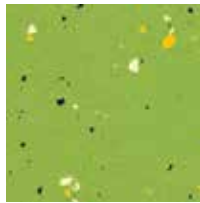
NCS: S 2050-Y40R

0075 Apricot



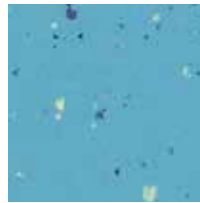
NCS: S 1060-Y

0001 Lemon Yellow



NCS: S 2050-G40Y

0030 Lime Green



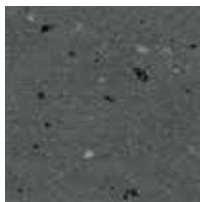
NCS: S 3030-B10G

0020 Aqua Turquoise



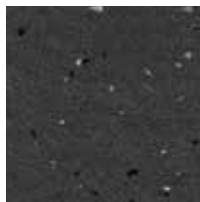
NCS: S 5005-Y20R

0059 Concrete Grey



NCS: S 7500-N

0083 Light Grey



NCS: S 8000-N




0085 Mid Grey



NCS: S 8500-N

0080 Black

## LINO ART METALLIC

    
Prod. code: 502  
All colors



NCS: S 7500-N

0083 Alumino Light Grey



NCS: S 8010-Y70R




0060 Bronze Warm Brown



NCS: S 8500-N

0080 Firmament Black

## LINO ART NATURE

    
Prod. code: 465  
All colors



NCS: S 1010-Y30R

0041 Sand Beige



NCS: S 2020-Y40R

0040 Maple Beige



NCS: S 3020-Y30R

0063 Alder Brown



NCS: S 5020-Y30R

0064 Oak Brown



NCS: S 6020-Y30R

0067 Walnut Brown

# LINO ART URBAN **NEW** Available January 2019



NCS: S 3010-G60Y

0552 Silver Grey



NCS: S 3502-Y

0555 Flashy Street Grey



NCS: S 4005-Y20R

0550 Beton Soft Grey



NCS: S 5005-G80Y

0554 Concrete Grey



NCS: S 4005-G70Y

0556 Mud Grey



NCS: S 4005-G90Y

0557 Urban Grey



NCS: S 5010-Y30R

0558 Screed Grey



NCS: S 6502-Y

0560 Bold Grey



NCS: S 5005-G80Y

0551 Flashy Asphalt Grey



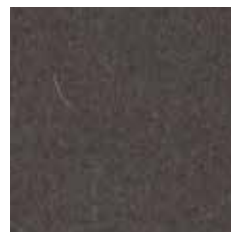
NCS: S 5005-Y20R

0559 Vintage Grey



NCS: S 6005-Y20R

0553 Dark Concrete Grey






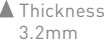
NCS: S 8500-N

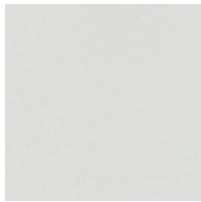
0561 Pitch Black



# LINOLEUM COMPACT

## UNI WALTON

 Compact	 LPX	 2,5 mm	 ▲ Thickness 3.2mm
	Prod. code: 101	All colors	Prod. code: 208



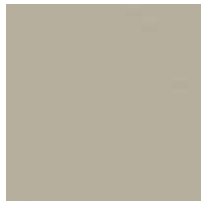
NCS: S 2002-Y

0059 Frost Grey



NCS: S 4000-N

0081 Nickel Grey



NCS: S 4005-Y20R

0085 Warm Concrete Grey ▲



NCS: S 2010-Y30R

0043 Neutral Beige



NCS: S 4050-Y60R

0062 Terracotta



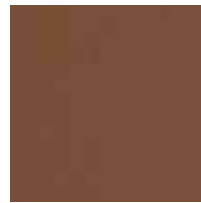
NCS: S 5500-N

0082 Broken Grey



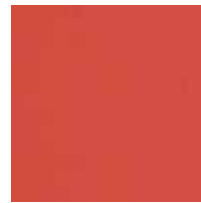
NCS: S 6502-Y

0058 Dark Concrete Grey



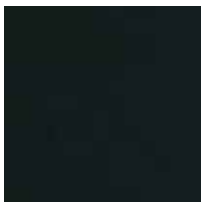
NCS: S 6020-Y70R

0060 Deep Brown ▲



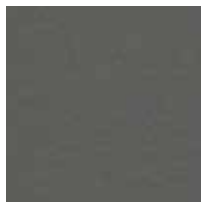
NCS: S 3060-Y90R

0010 Pompeji Red



NCS: S 9000-N

0080 Black



NCS: S 7500-N

0083 Industrial Grey



NCS: S 8010-B90G

0035 Racing Green



NCS: S 6030-Y90R

0088 Chestnut ▲

## GRANETTE

 Compact	 PUR	 2,5 mm
	Prod. code: 117	All colors



NCS: S 5005-Y20R

0064 Stone Beige



NCS: S 4502-R

0151 Asphalt Grey



NCS: S 6005-Y20R

0065 Cashmere Brown



NCS: S 5502-R

0152 Cement Grey



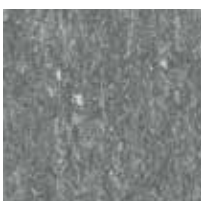
NCS: S 7005-Y50R

0066 Terra Brown



NCS: S 2000-N, S 9000-N

0057 Light Stone



NCS: S 7500-N

0153 Metal Grey



NCS: S 7502-B

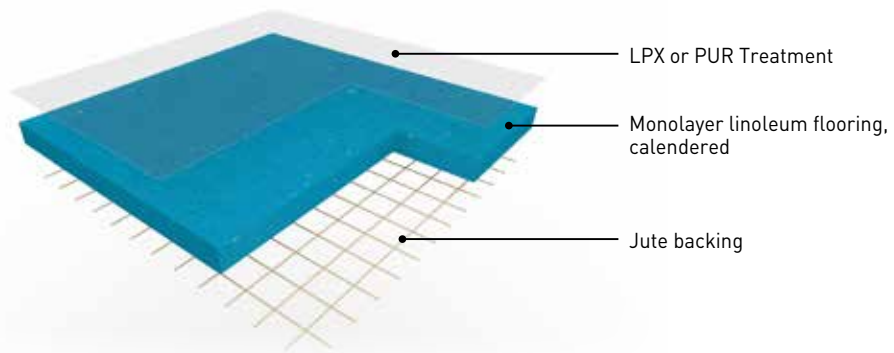
0059 Graphite Grey



NCS: S 2000-N, S 9000-N

0058 Coal Black

# LINOLEUM COMPACT



▶ **MARMORETTE** is a linoleum compact floorcovering in sheet, 2m wide, providing excellent resistance to wear and tear in high traffic areas. Its weight is 2400gr/sqm in 2.0mm, 2900gr/sqm in 2.5mm and 3800gr/sqm in 3.2mm. It features a marbled design and is composed of natural materials (linseed oil, wood flour, natural resins, cork flour, limestone, color pigments and jute fabric). LPX surface treatment ensures an excellent durability and an easy maintenance. PUR surface treatment is particularly well resistant against stains. The camouflage welding rod makes the connections between the strips invisible. It resists very well to the incandescent cigarette, is antistatic and antibacterial. The flooring is composed of up to 40% recycled content 100% controlled, is REACH compliant and rated C<sub>fl</sub>-s1 for fire resistance.



▶ **LINO ART** is a linoleum compact floorcovering in sheet, 2m wide, providing excellent resistance to wear and tear in high traffic areas. Its weight is 2900gr/sqm. It features a striated design (**LINO ART NATURE**), scattered metallic design (**LINO ART METALLIC**), scattered colour chips design (**LINO ART STAR**) or concrete design (**LINO ART URBAN**) and is composed of natural materials (linseed oil, wood flour, natural resins, cork flour, limestone, color pigments and jute fabric). LPX surface treatment ensures an excellent durability and an easy maintenance. The uni welding rod makes the connections between the strips invisible. It resists very well to the incandescent cigarette, is antistatic and antibacterial. The flooring is composed of up to 40% recycled content 100% controlled, is REACH compliant and rated C<sub>fl</sub>-s1 for fire resistance.



▶ **COLORETTE** is a linoleum compact floorcovering in sheet, 2m wide, providing excellent resistance to wear and tear in high traffic areas. Its weight is 2900gr/sqm. It features a speckled design and is composed of natural materials (linseed oil, wood flour, natural resins, cork flour, limestone, color pigments and jute fabric). LPX surface treatment ensures an excellent durability and an easy maintenance. The uni welding rod makes the connections between the strips invisible. It resists very well to the incandescent cigarette, is antistatic and antibacterial. The flooring is composed of up to 40% recycled content 100% controlled, is REACH compliant and rated C<sub>fl</sub>-s1 for fire resistance.



▶ **GRANETTE** is a linoleum compact floorcovering in sheet, 2m wide, providing excellent resistance to wear and tear in high traffic areas. Its weight is 2900gr/sqm. It features a granulated design and is composed of natural materials (linseed oil, wood flour, natural resins, cork flour, limestone, color pigments and jute fabric). PUR surface treatment ensures an excellent durability and an easy maintenance. The camouflage welding rod makes the connections between the strips invisible. It resists very well to the incandescent cigarette, is antistatic and antibacterial. The flooring is composed of up to 40% recycled content 100% controlled, is REACH compliant and rated C<sub>fl</sub>-s1 for fire resistance.



▶ **UNI WALTON** is a linoleum compact floorcovering in sheet, 2m wide, providing excellent resistance to wear and tear in high traffic areas. Its weight is 2900gr/sqm in 2.5mm and 3800gr/sqm in 3.2mm. It features a uni design and is composed of natural materials (linseed oil, wood flour, natural resins, cork flour, limestone, color pigments and jute fabric). LPX surface treatment ensures an excellent durability and an easy maintenance. The uni welding rod makes the connections between the strips invisible. It resists very well to the incandescent cigarette, is antistatic and antibacterial. The flooring is composed of up to 40% recycled content 100% controlled, is REACH compliant and rated C<sub>fl</sub>-s1 for fire resistance.

# LINOLEUM COMPACT

MARMORETTE LPX

MARMORETTE PUR

## DESCRIPTION

Type of flooring	EN ISO 24011 [EN 548]	-	Linoleum with LPX surface treatment	Linoleum with PUR surface treatment
Pattern	-	-	Marbled	Marbled
Total thickness	EN ISO 24346 [EN 428]	mm	2.0 / 2.5 / 3.2	2.5
Backing	-	-	Jute fabric	Jute fabric
Weight	EN ISO 23997 [EN 430]	g/sqm	2400 / 2900 / 3800	2900
Width of sheet	EN ISO 24341 [EN 426]	cm	200	200
Length of sheet	EN ISO 24341 [EN 426]	m	20-31	20-31


## CLASSIFICATION

Norm / Product specification	-	-	EN ISO 24011	EN ISO 24011
European classification	EN ISO 10874 [EN 685]	class	23 / 34 / 42 / 43 23 / 32 / 41 in 2.0mm	23 / 34 / 42 / 43
Fire rating	EN 13501-1	class	Cfl-s1*	Cfl-s1*
Slip resistance	ASR A1.5 / DIN 51130 – BGR 181	class	R9	R9
Dynamic friction coefficient	EN 13893	-	DS (>0.30)	DS (>0.30)
Impact sound insulation	EN ISO 10140	dB	3 dB / 5 dB / 6 dB	5 dB

## PERFORMANCES

Residual indentation	EN ISO 24343-1 [EN 433]	mm	≤ 0.15	≤ 0.15
Colour fastness	EN ISO 105 - B02	degree	≥ 6	≥ 6
Point contact resistance	VDE 0100	kOhm	> 200	> 200
Static electrical propensity	EN 1815	kV	app. 2.0	app. 2.0
Castor chair test [Type W]	ISO 4918	-	OK	OK
Thermal resistance	EN 12667	sqm,K/W	0.012 / 0.015 / 0.018	0.015
Thermal conductivity	EN ISO 10456 [EN 12 524]	W/(m.K)	0.17	0.17
Surface treatment	-	-	LPX	PUR
Chemical products resistance	EN ISO 26987 [EN 423]	-		Resistance to fat and mineral oil
Antibacterial activity	JIS Z 2801	-		

## CE MARKING

	EN 14041 : 2004	-		
	AC : 2006	-		

\* Glued according to certificate.

DOP numbers available from your local branch.



Depending on light exposure, the product colour can vary, due to linoleum natural oxidization process. This process is reversible. We recommend that the samples be exposed to sunlight for several hours prior to making a final color choice.



COLORETTE LPX	COLORETTE PUR	UNI WALTON LPX	LINO ART LPX STAR / NATURE / METALLIC / URBAN	GRANETTE PUR
Linoleum with LPX surface treatment	Linoleum with PUR surface treatment	Linoleum with LPX surface treatment	Linoleum with LPX surface treatment	Linoleum with PUR surface treatment
Speckled	Speckled	Uni	STAR: scattered colour chips. NATURE: striated designs. METALLIC: scattered metallic designs. URBAN: Concrete design.	Granulated
2.5	2.5	2.5 / 3.2	2.5	2.5
Jute fabric	Jute fabric	Jute fabric	Jute fabric	Jute fabric
2900	2900	2900 / 3800	2900	2900
200	200	200	200	200
20-31	20-31	20-31	20-31	20-31
EN ISO 24011	EN ISO 24011	EN ISO 24011	EN ISO 24011	EN ISO 24011
23 / 34 / 42 / 43	23 / 34 / 42 / 43	23 / 34 / 42 / 43	23 / 34 / 42 / 43	23 / 34 / 42 / 43
C <sub>fl-s1*</sub>	C <sub>fl-s1*</sub>	C <sub>fl-s1*</sub>	C <sub>fl-s1*</sub>	C <sub>fl-s1*</sub>
R9	R9	R9	R9	R9
DS (>0.30)	DS (>0.30)	DS (>0.30)	DS (>0.30)	DS (>0.30)
5 dB	5 dB	5 dB / 6 dB	5 dB	5 dB
≤ 0.15	≤ 0.15	≤ 0.15	≤ 0.15	≤ 0.15
≥ 6	≥ 6	≥ 6	≥ 6	≥ 6
> 200	> 200	> 200	> 200	> 200
app. 2.0	app. 2.0	app. 2.0	app. 2.0	app. 2.0
OK	OK	OK	OK	OK
0.015	0.015	0.015	0.015	0.015
0.17	0.17	0.17	0.17	0.17
LPX	PUR	LPX	LPX	PUR

and short term resistance against diluted acids (LPX) / Excellent resistance against acids and alkaline in high concentration (PUR)

DLW linoleum has an antibacterial activity



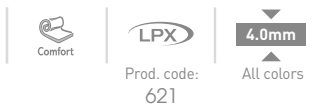


# LINOLEUM ACOUSTIC



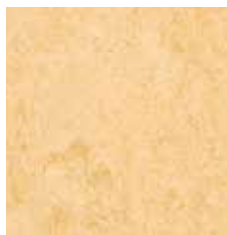
# LINOLEUM ACOUSTIC

## MARMORETTE ACOUSTIC



0019 Sunset Orange

NCS: S 2050-Y60R



0098 Desert Beige

NCS: S 2020-Y30R



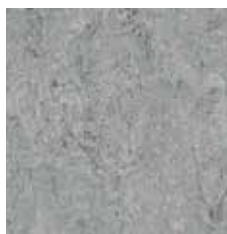
0045 Sand Beige

NCS: S 2010-Y10R



0059 Plumb Grey

NCS: S 7502-B



0053 Ice Grey

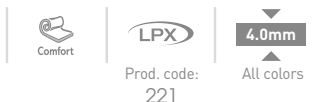
NCS: S 4502-B



0023 Dusty Blue

NCS: S 4020-R90B

## MARMORETTE ACOUSTICPLUS



0129 Curacao Petrol

NCS: S 4050-B40G



0130 Antique Green

NCS: S 3030-B50G



0022 Autumn Blue

NCS: S 5020-R90B



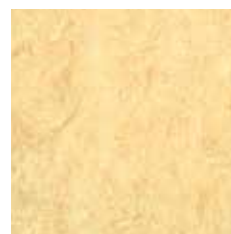
0073 Spicy Orange

NCS: S 3050-Y40R



0070 Rocky Brown

NCS: S 2030-Y30R



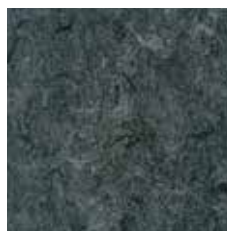
0040 Light Sahara

NCS: S 2020-Y20R



0096 Midnight Grey

NCS: S 8000-N



0059 Plumb Grey

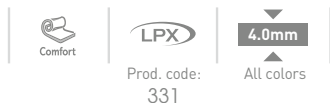
NCS: S 7502-B



0053 Ice Grey

NCS: S 4502-B

## COLORETTE ACOUSTICPLUS



NCS: S 1070-Y

0001 Banana Yellow



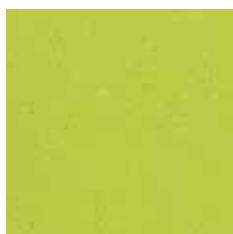
NCS: S 2070-Y50R

0170 Kumquat Orange



NCS: S 2050-R30B

0110 Cadillac Pink



NCS: S 0565-G50Y

0132 Lime Green



NCS: S 2060-B

0123 Poppy Blue



NCS: S 3040-R80B

0004 Bluebird



NCS: S 3005-Y20R

0012 Light Beige



NCS: S 5502-B

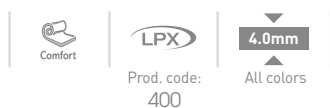
0059 Stone Grey



NCS: S 6502-B

0080 Elephant Grey

## LINO ART NATURE ACOUSTICPLUS



NCS: S 5500-N

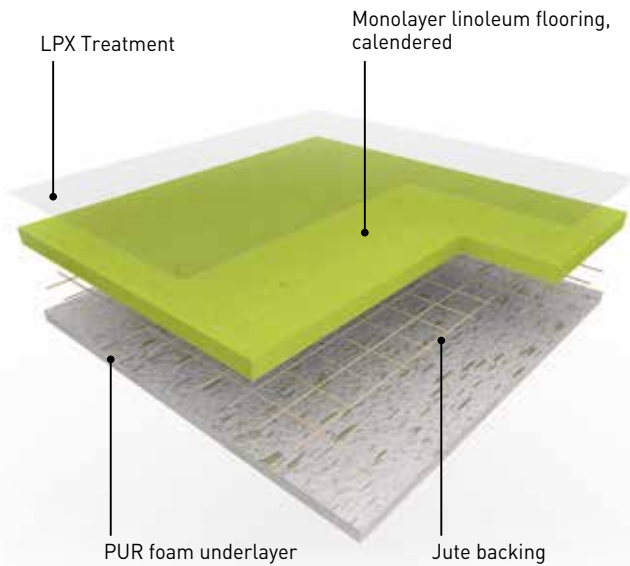
0050 Concrete Grey



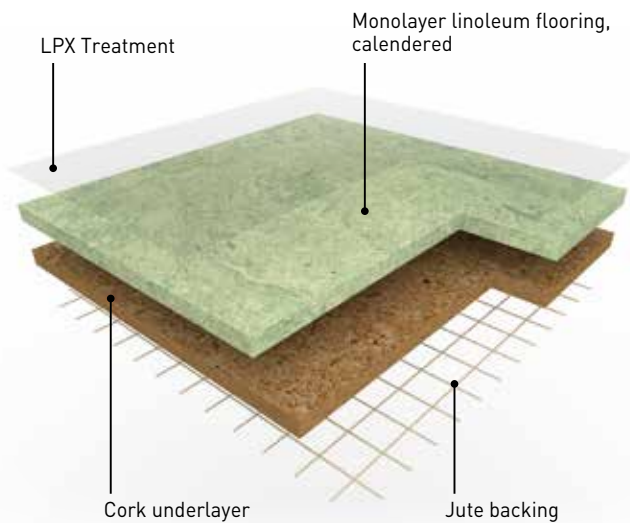
NCS: S 4005-Y50R

0043 Pulp Greige

# LINOLEUM ACOUSTIC



▶ **MARMORETTE ACOUSTICPLUS LPX, COLORETTE ACOUSTICPLUS LPX and LINO ART NATURE ACOUSTIC PLUS LPX** are linoleum acoustic floorcoverings in sheet, 2m wide, providing excellent resistance to wear and tear in high traffic areas. Their weight is 3500gr/sqm. They feature a marbled design (MARMORETTE), a speckled design (COLORETTE) and a striated design (LINO ART NATURE) are composed of natural materials (linseed oil, wood flour, natural resins, cork flour, limestone, color pigments and jute fabric) and a 1.5mm recycled polyurethane foam underlayer, ensuring up to 18dB impact sound reduction. The LPX surface treatment ensures an excellent durability and an easy maintenance. Camouflage and uni welding rods make the connections between the strips invisible. They resist very well to the incandescent cigarette, are antistatic and antibacterial. The flooring is composed of up to 40% recycled content 100% controlled, are REACH compliant and rated C<sub>fl</sub>-s1 for fire resistance.



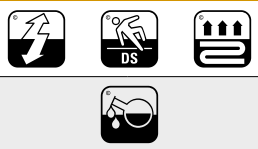

▶ **MARMORETTE ACOUSTIC** is a linoleum acoustic floorcovering in sheet, 2m wide, providing excellent resistance to wear and tear in high traffic areas. It features a marbled design is composed of natural materials (linseed oil, wood flour, natural resins, cork flour, limestone, color pigments and jute fabric) along with a 2.0mm or 3.2mm cork underlayer, ensuring respectively 14dB and 15dB impact sound reduction. The LPX surface treatment ensures an excellent durability and an easy maintenance. Camouflage welding rods make the connections between the strips invisible. It resists very well to the incandescent cigarette, is antistatic and antibacterial. The flooring is composed of up to 40% recycled content 100% controlled, is REACH compliant and rated C<sub>fl</sub>-s1 for fire resistance.



## KORKMENT: CORK ACOUSTIC UNDERLAYER

- 2.0mm underlayer (weight 1.2kg/sqm), 14dB impact sound reduction

0102 Korkment

			MARMORETTE ACOUSTIC PLUS LPX	COLORETTE ACOUSTIC PLUS LPX	LINO ART NATURE ACOUSTIC PLUS LPX	MARMORETTE ACOUSTIC LPX
<b>DESCRIPTION</b>						
Type of flooring	-	-	Linoleum with polyurethane backing EN 686	Linoleum with polyurethane backing EN 686	Linoleum with polyurethane backing EN 686	Linoleum with cork backing EN 687
Pattern	-	-	Marbled	Speckled	Striated design	Marbled
Total thickness	EN ISO 24346 [EN 428]	mm	4.0	4.0	4.0	4.0
Backing	-	-	Polyurethane backing	Polyurethane backing	Polyurethane backing	Cork and jute fabric backing
Thickness of cork / foam backing	EN ISO 24340 [EN 429]	mm	1.5	1.5	1.5	2
Weight	EN ISO 23997 [EN 430]	g/sqm	3500	3500	3500	3900
Width of sheet	EN ISO 24341 [EN 426]	cm	200	200	200	200
Length of sheet	EN ISO 24341 [EN 426]	m	20-31	20-31	20-31	20-31
<b>CLASSIFICATION</b>						
Norm / Product specification	-	-	EN 686	EN 686	EN 686	EN 687
European classification	EN ISO 10874 [EN 685]	class	23 / 33 / 41	23 / 33 / 41	23 / 33 / 41	23 / 33 / 41
Fire rating	EN 13501-1	class	C <sub>fl</sub> -s1*	C <sub>fl</sub> -s1*	C <sub>fl</sub> -s1*	C <sub>fl</sub> -s1*
Slip resistance	ASR A1.5 / DIN 51130 – BGR 181	class	R9	R9	R9	R9
Dynamic friction coefficient	EN 13893	-	DS (>30)	DS (>30)	DS (>30)	DS (>30)
Impact sound insulation	EN ISO 10140	dB	18 dB	18 dB	18 dB	14 dB
<b>PERFORMANCES</b>						
Residual indentation	EN ISO 24343-1 [EN 433]	mm	≤ 0.30	≤ 0.30	≤ 0.30	≤ 0.40
Colour fastness	EN ISO 105 - B02	degree	≥ 6	≥ 6	≥ 6	≥ 6
Point contact resistance	VDE 0100	kOhm	> 200	> 200	> 200	> 200
Static electrical propensity	EN 1815	kV	app. 2.0	app. 2.0	app. 2.0	app. 2.0
Castor chair test (Type W)	ISO 4918	-	OK	OK	OK	OK
Thermal resistance	EN 12667	sqm,K/W	0.044	0.044	0.044	0.04
Thermal conductivity	EN ISO 10456 [EN 12 524]	W/(m.K)	0.0937	0.0937	0.0937	0.17
Surface treatment	-	-	LPX	LPX	LPX	LPX
Chemical products resistance	EN ISO 26987 [EN 423]	-	Resistance to fat and mineral oil and short term resistance against diluted acids			
Antibacterial activity	JIS Z 2801	-	DLW linoleum has an antibacterial activity			
<b>CE MARKING</b>						
CE	EN 14041 : 2004 AC : 2006	-				
		-				

\* Glued according to certificate.

DOP numbers available from your local branch.



Depending on light exposure, the product colour can vary, due to linoleum natural oxidization process. This process is reversible. We recommend that the samples be exposed to sunlight for several hours prior to making a final color choice.

# LINOLEUM TECHNIC





# LINOLEUM TECHNIC

## LINODUR



NCS: S 3502-Y

0056 Marble Grey



NCS: S 3020-B

0020 Spring Blue



NCS: S 8500-N

0081 Sporty Black



NCS: S 4040-R80B

0024 Speckled Blue



NCS: S 2060-Y40R

0072 Peach Orange



NCS: S 2050-G30Y

0011 Avocado Green

## LINODUR LCH



NCS: S 3020-B

0020 Spring Blue



NCS: S 3502-Y

0056 Marble Grey

## MARMORETTE LCH



NCS: S 4020-P90B

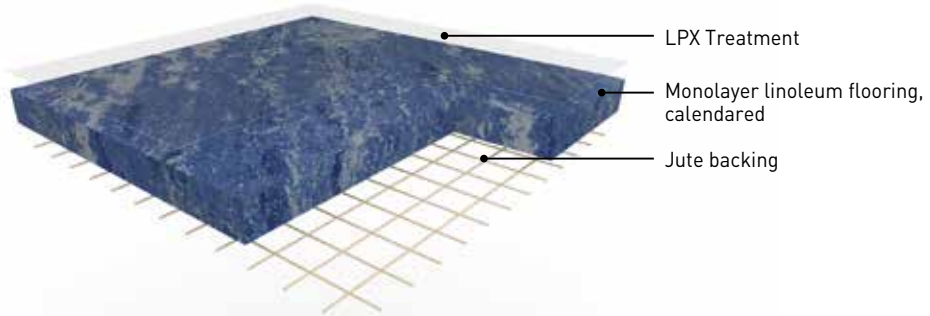
0023 Dusty Blue



NCS: S 4005-R80B

0055 Ash Grey

# LINOLEUM TECHNIC







▶ **LINODUR LPX** is a linoleum compact floorcovering in sheet, 4mm width and 2m wide, providing excellent resistance to wear and tear in high traffic areas. Its weight is 4700gr/sqm. It features a moiré design and is composed of natural materials (linseed oil, wood flour, natural resins, cork flour, limestone, color pigments and jute fabric). Its LPX surface treatment ensures an excellent durability and an easy maintenance. The camouflage welding rod makes the connections between the strips invisible. It resists very well to the incandescent cigarette, is antistatic, antibacterial and has been conceived to resist to the passage of heavy trolleys: dynamic load is 30kg/sqm. The flooring is composed of up to 40% recycled content 100% controlled, is REACH compliant and rated C<sub>fl</sub>-s1 for fire resistance.



▶ **LINODUR LCH LPX** is a linoleum compact dissipative floorcovering in sheet, 4mm width and 2m wide, providing excellent resistance to wear and tear in high traffic areas. Its weight is 4900gr/sqm. It features a moiré design and is composed of natural materials (linseed oil, wood flour, natural resins, cork flour, limestone, color pigments and jute fabric). Its LPX surface treatment ensures an excellent durability and an easy maintenance. The camouflage welding rod makes the connections between the strips invisible. It resists very well to the incandescent cigarette, is antistatic, antibacterial and has been conceived to resist to the passage of heavy trolleys: dynamic load is 30kg/sqm. The flooring is composed of up to 40% recycled content 100% controlled, is REACH compliant and rated C<sub>fl</sub>-s1 for fire resistance.



▶ **MARMORETTE LCH LPX** is a linoleum compact dissipative floorcovering in sheet, 2m wide, providing excellent resistance to wear and tear in high traffic areas. Its weight is 3000gr/sqm in 2.5mm and 3900gr/sqm in 3.2mm. It features a marbled design and is composed of natural materials (linseed oil, wood flour, natural resins, cork flour, limestone, color pigments and jute fabric). Its LPX surface treatment ensures an excellent durability and an easy maintenance. The camouflage welding rod makes the connections between the strips invisible. It resists very well to the incandescent cigarette, is antistatic and antibacterial. The flooring is composed of up to 40% recycled content 100% controlled, is REACH compliant and rated C<sub>fl</sub>-s1 for fire resistance.

			LINODUR LPX	MARMORETTE LCH LPX	LINODUR LCH LPX
<b>DESCRIPTION</b>					
Type of flooring	EN ISO 24011 (EN 548)	-	Linoleum with LPX surface treatment	Linoleum with LPX surface treatment	Linoleum with LPX surface treatment
Pattern	-	-	Moiré	Marbled	Moiré
Total thickness	EN ISO 24346 (EN 428)	mm	4.0	2.5 / 3.2	4.0
Backing	-	-	Jute fabric	Jute fabric	Jute fabric
Weight	EN ISO 23997 (EN 430)	g/sqm	4700	3000 / 3900	4900
Width of sheet	EN ISO 24341 (EN 426)	cm	200	200	200
Length of sheet	EN ISO 24341 (EN 426)	m	20-31	20-31	20-31
<b>CLASSIFICATION</b>					
Norm / Product specification	-	-	EN ISO 24011	EN ISO 24011	EN ISO 24011
European classification	EN ISO 10874 (EN 685)	class	23 / 34 / 43	23 / 34 / 42 / 43	23 / 34 / 43
Fire rating	EN 13501-1	class	C <sub>fl</sub> -s1*	C <sub>fl</sub> -s1*	C <sub>fl</sub> -s1*
Slip resistance	ASR A1.5 / DIN 51130 – BGR 181	class	R9	R9	R9
Barefoot slipping	DIN 51097	class	A	-	-
Dynamic friction coefficient	EN 13893	-	DS (>0.30)	DS (>0.30)	DS (>0.30)
Impact sound insulation	EN ISO 10140	dB	6 dB	3 dB / 5 dB	6 dB
<b>PERFORMANCES</b>					
Residual indentation	EN ISO 24343-1 (EN 433)	mm	≤ 0.20	≤ 0.15	≤ 0.20
Colour fastness	EN ISO 105 - B02	degree	≥ 6	≥ 6	≥ 6
Vertical resistance	EN 1081	Ohm	-	≤ 1 x 10 <sup>8</sup>	≤ 1 x 10 <sup>8</sup>
Point contact resistance	VDE 0100	kOhm	> 200	> 100	> 100
Static electrical propensity	EN 1815	kV	app. 2.0	app. 2.0	app. 2.0
Castor chair test (Type W)	ISO 4918	-	OK	OK	OK
Thermal resistance	EN 12667	sqm,K/W	0.023	0.015 / 0.018	0.023
Thermal conductivity	EN ISO 10456 (EN 12 524)	W/(m.K)	0.17	0.17	0.17
Surface treatment	-	-	LPX	LPX	LPX
Chemical products resistance	EN ISO 26987 (EN 423)	-	Resistance to fat and mineral oil and short term resistance against diluted acids		
Antibacterial activity	JIS Z 2801	-	DLW linoleum has an antibacterial activity		
<b>CE MARKING</b>					
CE	EN 14041 : 2004 AC : 2006	-			
		-			

\* Glued according to certificate.

DOP numbers available from your local branch.



Depending on light exposure, the product colour can vary, due to linoleum natural oxidization process. This process is reversible. We recommend that the samples be exposed to sunlight for several hours prior to making a final color choice.



# LINOLEUM SPORT



# LINOLEUM SPORT

## LINODUR SPORT



NCS: S 2050-Y40R

1072 Peach Orange



NCS: S 3010-B70G

1021 Celestial Blue



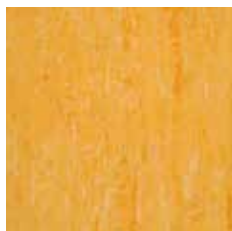
NCS: S 3502-G

1057 Heaven Blue



NCS: S 2020-Y10R

1051 Skate Beige



NCS: S 1050-Y20R

1074 Straw Yellow



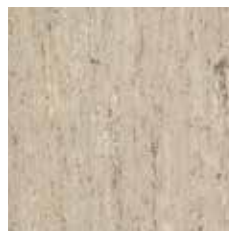
NCS: S 3020-G30Y

1036 Smooth Green



NCS: S 4020-R90B

1020 Spring Blue



NCS: S 2010-Y10R

1042 Stony Brown



NCS: S 2060-Y90R

1013 Lava Red



NCS: S 2050-G30Y

1011 Avocado Green



NCS: S 4030-R80B

1024 Speckled Blue



NCS: S 4000-N

1056 Marble Grey



NCS: S 7502-B

1081 Sporty Black

## NATURE SPORT



NCS: S 2020-Y40R

5040 Light Brown

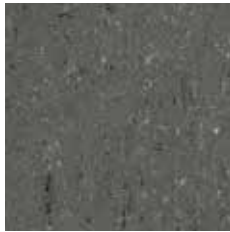
# COLORETTE SPORT



4.0mm

All colors

Prod. code: 613



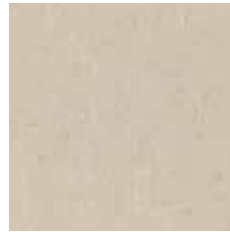
NCS: S 6502-B

1080 Elephant Grey



NCS: S 5502-B

1059 Stone Grey



NCS: S 3005-Y20R

1012 Light Beige



NCS: S 3040-R80B

1004 Bluebird



NCS: S 0580-Y90R

1118 Power Red



NCS: S 1070-Y30R

1171 Sunrise Orange



NCS: S 1070-Y

1001 Banana Yellow

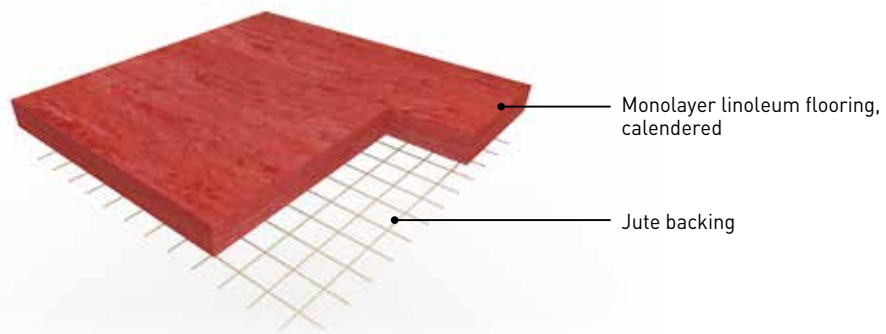


NCS: S 0565-G50Y

1132 Lime Green



# LINOLEUM SPORT



4.0mm

▶ **COLORETTE, LINODUR** and **NATURE SPORT** are linoleum compact floorcovering in sheet, 2m wide and 4mm thick. Their weight is 4700gr/sqm. It features a speckled design (COLORETTE), a moire design (LINODUR), or random striped design in tonal colours (NATURE SPORT) and are composed of natural materials (linseed oil, wood flour, natural resins, cork flour, limestone, color pigments and jute fabric). They resist very well to the incandescent cigarette, are antistatic, antibacterial and rated C<sub>fl</sub>-s1 for fire resistance.





			LINODUR SPORT	COLORETTE SPORT	NATURE SPORT
<b>DESCRIPTION</b>					
Type of flooring	EN ISO 24011 [EN 548]	-	Linoleum	Linoleum	Linoleum
Pattern	-	-	Moiré	Speckled	Striated design (wood effect)
Total thickness	EN ISO 24346 [EN 428]	mm	4.0	4.0	4.0
Backing	-	-	Jute fabric	Jute fabric	Jute fabric
Weight	EN ISO 23997 [EN 430]	g/sq.m	4700	4700	4700
Width of sheet	EN ISO 24341 [EN 426]	cm	200	200	200
Length of sheet	EN ISO 24341 [EN 426]	m	app. 28	app. 28	app. 28
<b>CLASSIFICATION</b>					
Norm / Product specification	-	-	EN 14904 / DIN 18032-2	EN 14904 / DIN 18032-2	EN 14904 / DIN 18032-2
European classification	EN ISO 10874 [EN 685]	class	23 / 34 / 43	23 / 34 / 43	23 / 34 / 43
Fire rating	EN 13501-1	class	C <sub>fl</sub> -s1*	C <sub>fl</sub> -s1*	C <sub>fl</sub> -s1*
Dynamic friction coefficient	DIN 18032-2	-	0.4 - 0.6 μ - Fulfilled	0.4 - 0.6 μ - Fulfilled	0.4 - 0.6 μ - Fulfilled
Friction	EN 14904	-	80-110 - Fulfilled	80-110 - Fulfilled	80-110 - Fulfilled
Impact sound insulation	EN ISO 10140	dB	6 dB	6 dB	6 dB
<b>PERFORMANCES</b>					
Residual indentation	EN ISO 24343-1 [EN 433]	mm	≤ 0.20	≤ 0.20	≤ 0.20
Colour fastness	EN ISO 105 - B02	degree	≥ 6	≥ 6	≥ 6
Light reflexion	DIN 5036-3	-	p ≥ 0.20 fulfilled (excepted colours 0024 and 0081)	p ≥ 0.20 fulfilled (excepted colours 0004 and 0080)	p ≥ 0.20 fulfilled
Static electrical propensity	EN 1815	kV	app. 2.0	app. 2.0	app. 2.0
Castor chair test (Type W)	ISO 4918	-	OK	OK	OK
Thermal resistance	EN 12667	sqm,K/W	0.023	0.023	0.023
Thermal conductivity	EN ISO 10456 [EN 12 524]	W/(m.K)	0.17	0.17	0.17
Chemical products resistance	EN ISO 26987 [EN 423]	-	Resistance to fat and mineral oil and short term resistance against diluted acids		
Antibacterial activity	JIS Z 2801	-	DLW linoleum has an antibacterial activity		
<b>CE MARKING</b>					
CE	EN 14904 : 2006	-			
		-			

\* Glued according to certificate.

DOP numbers available from your local branch.

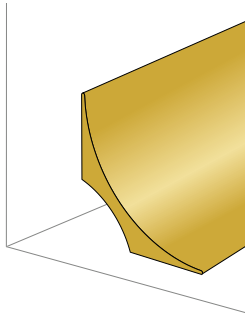
Depending on light exposure, the product colour can vary, due to linoleum natural oxidization process. This process is reversible. We recommend that the samples be exposed to sunlight for several hours prior to making a final color choice.





# FINISHES

## COVING SOLUTIONS



4012 - 4014



Color: 6512

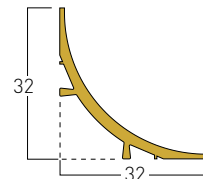
### PVC COVE FORMER

**This accessory allows the floor-wall cove to be formed**

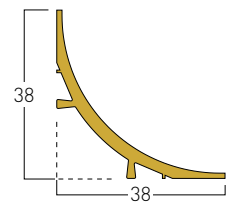
- ▶ Its rounded shape **makes it easier to clean** the floor-wall junction.
- ▶ Gives a better look
- ▶ Limits the risk of piercing the floor covering
- ▶ **Prevents accumulation** of dirt and bacteria

*TIPS: Use a mitre shear for a perfect cut*

4012



4014



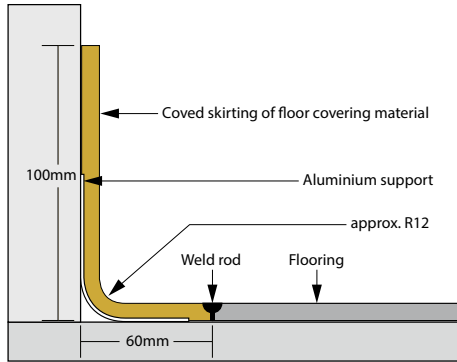
**Packaging**

30 x 2 lm strips.

*Colours and images are not contractual.*



## HOLLOW GROOVE SKIRTING HSLA



- ▶ HSLA is a solution of flooring strengthened by an aluminum backing which will be delivered already combined from Gerflor DLW Flooring.
- ▶ The HSLA is very aesthetic because of its narrow radius
- ▶ Easy to clean.
- ▶ Can be used on any types of subfloors and as well for vinyl as for linoleum flooring up to 3.2 mm thickness.

	Code
Compact 2.0mm	8009999
Compact 2.5mm	8019999
Compact 3.2mm	8029999
Conductive (LCH)	8049999



# CLEANING LINOLEUM FLOORS

## MARMORETTE / COLORETTE / GRANETTE / UNI WALTON / LINO ART / LINODUR



**Damp sweeping equipment**  
Flexible mop preferably fitted with disposable, antistatic and/or pre-impregnated gauze strips

















**Mechanical cleaning equipment**  
Auto scrubber, rotocleaner or single-brush machine



**Mechanical cleaning disk**  
3M (or equivalent) colour disks



**Single disk machine**

	EQUIPMENT USED	CLEANING PRODUCTS	CLEANING METHODS
Initial treatment	 <b>Manual cleaning</b> OR   <b>Mechanical cleaning</b>	Neutral or alcohol detergent (pH <9)	<ul style="list-style-type: none"> <li>• Damp sweeping</li> <li>• Mechanical washing with red disk at 160 - 180 rpm (with water recovery)                             <ul style="list-style-type: none"> <li>• Rinsing</li> </ul> </li> <li>• Application of redispersible detergent                             <ul style="list-style-type: none"> <li>• Dry polishing (300 - 100 rpm)</li> </ul> </li> </ul>
Daily cleaning	 <b>Manual cleaning</b> OR   <b>Mechanical cleaning</b>	Neutral or alcohol detergent (PUR)  Floor maintainer (LPX)	<ul style="list-style-type: none"> <li>• Damp sweeping</li> <li>• Mechanical washing with red disk at 160 - 180 rpm (with water recovery)</li> </ul>
Weekly cleaning	  <b>Mechanical cleaning</b>	Cleaner spray	<ul style="list-style-type: none"> <li>• Spray buffing with red or beige disk at 300 - 1000 rpm</li> </ul>
Deep cleaning	 <b>Manual cleaning</b> OR   <b>Mechanical cleaning</b>	Intensive clean agent (pH <9)	<ul style="list-style-type: none"> <li>• Damp sweeping</li> <li>• Mechanical washing with red disk at 160 - 180 rpm (with water recovery)                             <ul style="list-style-type: none"> <li>• Rinsing</li> </ul> </li> <li>• Application of redispersible detergent with red disk                             <ul style="list-style-type: none"> <li>• Dry polishing</li> </ul> </li> </ul>
Reconditioning	 <b>LPX Floors</b>  	Stripper for linoleum (pH <9) Acrylic emulsion	<ul style="list-style-type: none"> <li>• Damp sweeping                             <ul style="list-style-type: none"> <li>• Stripping</li> <li>• Rinsing</li> </ul> </li> <li>• Application of acrylic emulsion in 3 crossed layers, respecting the drying time between each layers</li> </ul>

*These cleaning instructions have to be adapted depending on traffic and location of the area.*



Gerflor DLW flooring products are to be installed in full accordance with Gerflor DLW installation instructions and recognized trade standards.

An effective, regular cleaning and maintenance program is vital for retaining a high appearance level. Gerflor DLW flooring products should only be used as floorcoverings.

Note: Gerflor DLW reserve the right to amend this specification without giving prior notice. For the latest versions of the technical specifications, check our website: [www.gerflor.com](http://www.gerflor.com)

**INSTALLATION  
& MAINTENANCE  
GUIDELINES  
AVAILABLE ON**



**Gerflor International**

Tel: +33 (0)4 74 05 40 00

Fax: +33 (0)4 74 05 03 13

e-mail: gerflorcontract@gerflor.com

gerflor.com

ARCHITECTURE  
DECORATION  
SPORT  
TECHNOSPECIFIC

**Gerflor** Don't forget our complementary ranges!



Handrails



Wall Coverings  
& Protections



Entrance mats



Skirtings  
& Profiles

**Gerflor**

Be connected!



www.gerflor.com

#Gerflor

GERFLOR, **ACTIONS SPEAK LOUDER THAN WORDS**



**COMPOSITION**

98% organic

80% renewable (linseed oil, wood powder, cork, resins, jute)

100% REACH compliant



**RECYCLED  
CONTENT**

Up to 40% recycled content



**LCA**

Eco designed according to a product specific life cycle analysis

Manufactured in a iso 14001 certified site



**WELLNESS**

Antibacterial activity

Walking comfort

Photo credits: Gerflor - Realisation: Cocco & Co - 11/2018 - Z004 5261 - Indicative documentation Cost: 5€